

The *JAYWICK* (Plots 26, 31, 38, 46, 49, 50, 51 & 52)

4 Bedroom Detached Home

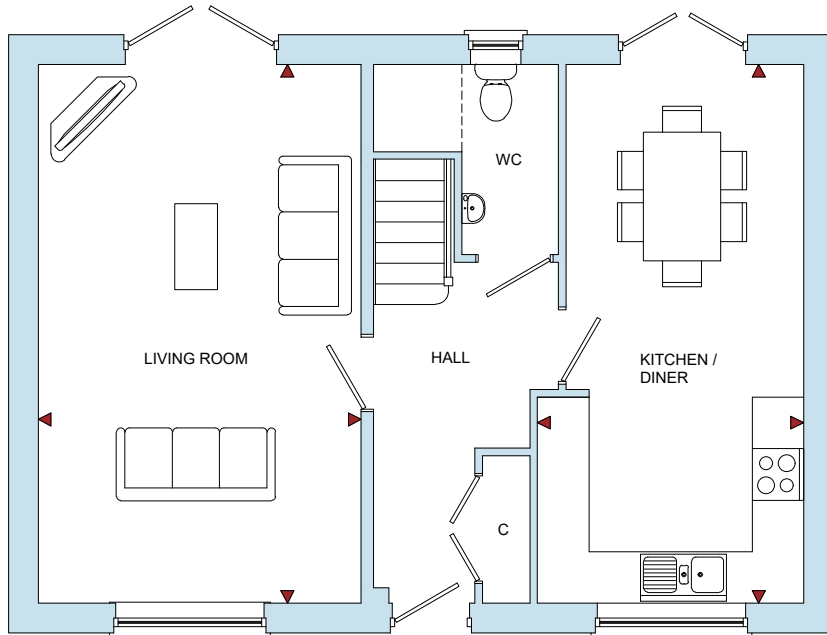


This CGI is an indicative representation of the external finish of this house type on one of the properties on this development. Our sales representative will be happy to discuss the external finish on any specific plot with you.

The *JAYWICK* (Plots 26, 31, 38, 46, 49, 50, 51 & 52)

4 Bedroom Detached Home

ROOM	IMPERIAL / "	METRIC / mm
Living Room	12' 4" x 20' 7"	3760 x 6275mm
Kitchen / Diner	10' 2" x 20' 7"	3100 x 6275mm

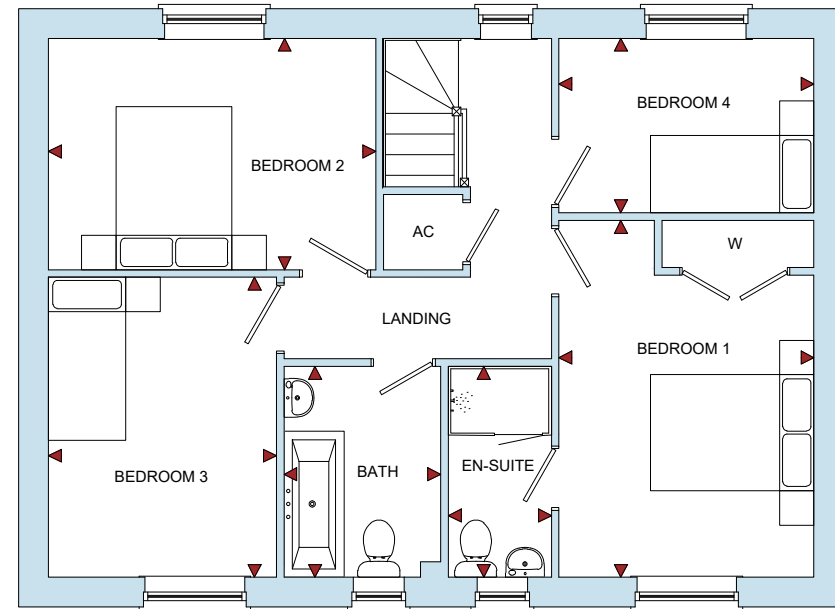


GROUND FLOOR

The *Spires*

Moreton-on-Lugg, Herefordshire, HR4 8DE

ROOM	IMPERIAL / "	METRIC / mm
Bedroom 1	9' 9" x 13' 8"	2968 x 4156mm
Bedroom 2	12' 6" x 8' 10"	3812 x 2695mm
Bedroom 3	8' 9" x 11' 6"	2654 x 3492mm
Bedroom 4	9' 9" x 6' 8"	2968 x 2032mm
Bathroom	6' 0" x 8' 1"	1825 x 2455mm
En-Suite	3' 11" x 8' 1"	1200 x 2455mm



FIRST FLOOR

TOTAL FLOOR AREA
1204ft² / 111.8m²

www.bellhomes.com

bellhomes

the name that stands for quality homes

We strive to make each home and development as varied and interesting as possible. Therefore the above is for illustration purposes only and individual properties may vary. Please ask for details of specific properties. Every care has been taken with the preparation of this information, which has been produced for your guidance only and does not form part of a contract. The Plans are NOT TO SCALE. Please do not use this information for purchase of furnishings and furniture.