

# The *COBERLEY* (Plot 4)

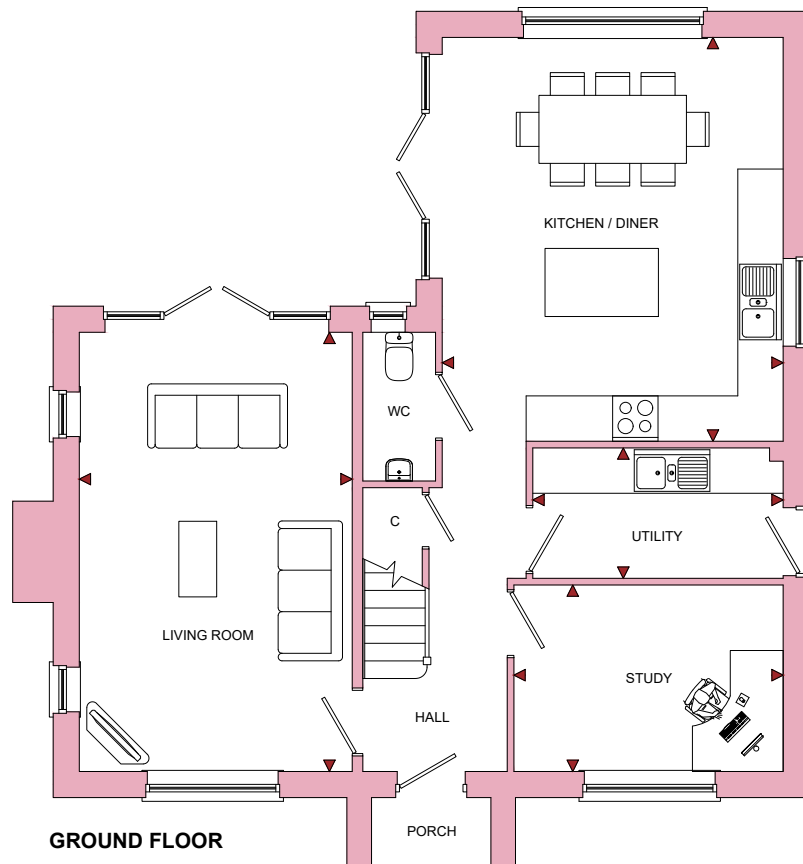
4 Bedroom Detached Home



# The COBERLEY (Plot 4)

4 Bedroom Detached Home

ROOM	IMPERIAL / "	METRIC / mm
Living Room	11' 10" x 19' 1"	3610 x 5810mm
Kitchen / Diner	14' 10" x 17' 6"	4510 x 5342mm
Utility	10' 11" x 8' 8"	3312 x 1725mm
Study	11' 8" x 8' 1"	3562 x 2468mm



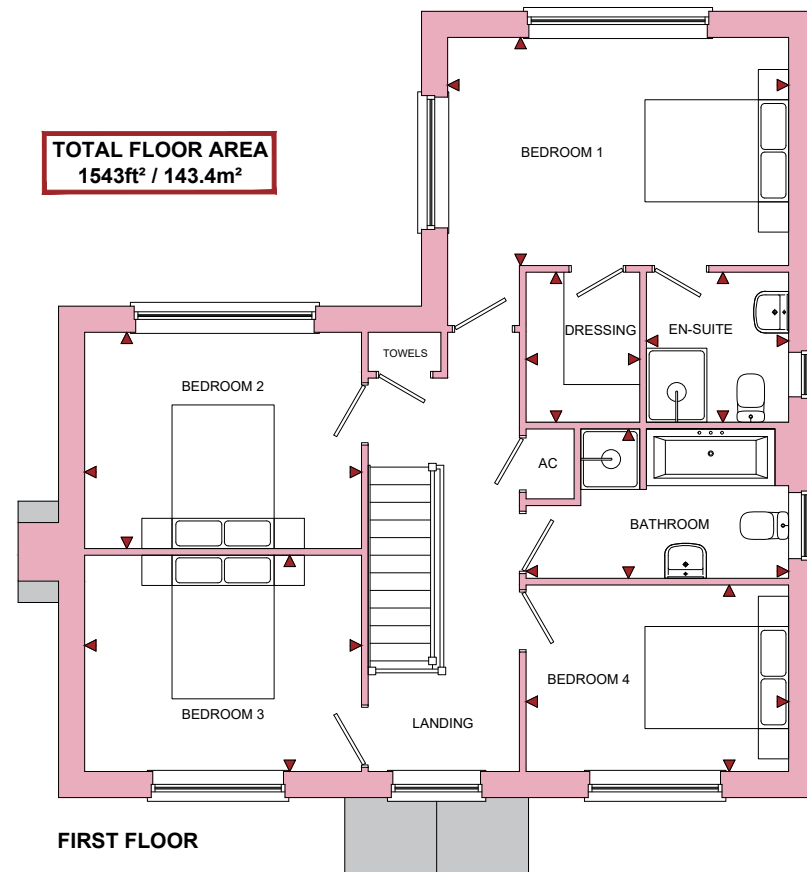
GROUND FLOOR

PORCH

# The Vines

Redmarley D'Abitot, Gloucestershire, GL19 3HS

ROOM	IMPERIAL / "	METRIC / mm
Bedroom 1	14' 10" x 9' 11"	4510 x 3018mm
Bedroom 2	12' 0" x 9' 5"	3662 x 2861mm
Bedroom 3	12' 0" x 9' 5"	3662 x 2861mm
Bedroom 4	11' 5" x 8' 1"	3472 x 2468mm
Bathroom	11' 5" x 6' 6"	3472 x 1975mm
En-Suite	6' 2" x 6' 6"	1880 x 1986mm
Dressing Room	4' 11" x 6' 6"	1504 x 1986mm



**TOTAL FLOOR AREA**  
1543ft<sup>2</sup> / 143.4m<sup>2</sup>

FIRST FLOOR

[www.bellhomes.com](http://www.bellhomes.com)

**bellhomes**

the name that stands for quality homes

We strive to make each home and development as varied and interesting as possible. Therefore the above is for illustration purposes only and individual properties may vary. Please ask for details of specific properties. Every care has been taken with the preparation of this information, which has been produced for your guidance only and does not form part of a contract. The Plans are NOT TO SCALE. Please do not use this information for purchase of furnishings and furniture.

**The Vines, Redmarley D'Abitot, Gloucestershire, GL19 3HS**

**The Coberley**

**Key Features/Included Specification**

- Help to Buy Available
- Choice of Kitchen and Worktops
- Choice of Wall and Floor Tiles to Kitchen and Bathrooms
- Choice of Carpets
- Hardwood Staircase & Internal Doors
- Bosch Double Oven, Hob & Chimney Hood
- Bosch Fully Integrated Dishwasher & Full Height Fridge/Freezer
- Downlighters to Kitchen and Bathrooms
- Under Pelmet Lighting to Kitchen
- Choice of Electric Fire and Surround or Woodburning Stove
- Fully Integrated Security System
- Utility
- Large Kitchen/Dining Area with Breakfast Bar and French Doors to Rear Garden
- Large Lounge with French Doors to Rear Garden
- En-suite to Main Bedroom
- 4 Double Bedrooms with Walk in Wardrobe to Master Bedroom
- Single Garage with 2 Additional Parking Spaces
- Electric Car Charging Point
- Extensive Garden with Views of Surrounding Countryside
- Optional Rear Access to Large Communal Garden and Wildflower Area

