

The *WOODVILLE* (Plot 32)

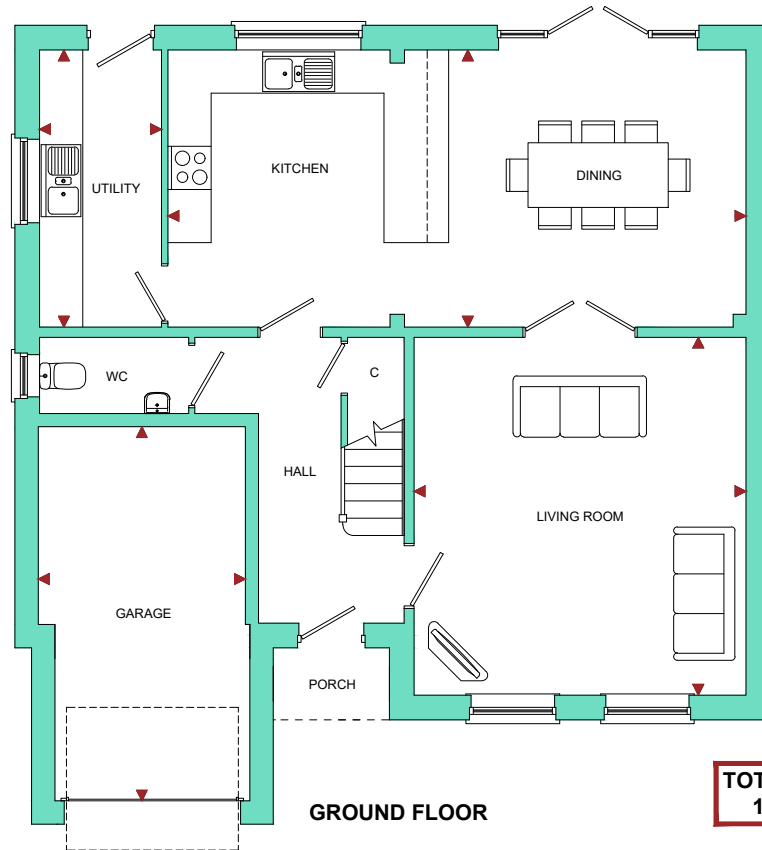
4 Bedroom Detached Home



The **WOODVILLE** (Plot 32)

4 Bedroom Detached Home

ROOM	IMPERIAL / "	METRIC / mm
Living Room	15' 2" x 16' 4"	4610 x 4970mm
Kitchen / Diner	26' 4" x 12' 8"	8029 x 3850mm
Utility	5' 7" x 12' 8"	1693 x 3850mm
Garage	9' 5" x 17' 1"	2878 x 5197mm

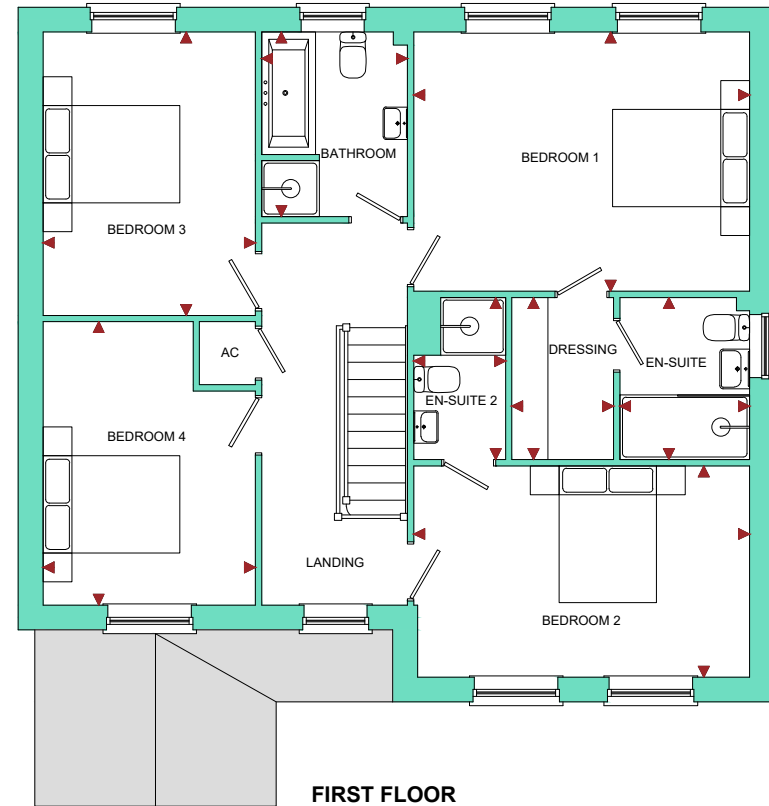


TOTAL FLOOR AREA
1685ft² / 156.5m²

Willow Walk

Lea, Ross-on-Wye, HR9 7ND

ROOM	IMPERIAL / "	METRIC / mm
Bedroom 1	15' 4" x 11' 10"	4662 x 3601mm
Bedroom 2	15' 4" x 9' 8"	4662 x 2933mm
Bedroom 3	9' 8" x 12' 11"	2947 x 3936mm
Bedroom 4	9' 8" x 12' 11"	2947 x 3936mm
Bathroom	6' 8" x 8' 5"	2025 x 2563mm
En-Suite	5' 11" x 7' 5"	1800 x 2250mm
En-Suite 2	4' 4" x 7' 5"	1275 x 2250mm
Dressing Room	4' 8" x 7' 5"	1411 x 2250mm



www.bellhomes.com

bellhomes

the name that stands for quality homes

We strive to make each home and development as varied and interesting as possible. Therefore the above is for illustration purposes only and individual properties may vary. Please ask for details of specific properties. Every care has been taken with the preparation of this information, which has been produced for your guidance only and does not form part of a contract. The Plans are NOT TO SCALE. Please do not use this information for purchase of furnishings and furniture.



bellhomes

the name that stands for **quality homes**

Willow Walk, Lea, Ross-On-Wye, Herefordshire, HR9 7ND

The Woodville

Key Features/Included Specification

- Help to Buy Available
- Choice of Kitchen and Worktops
- Choice of Wall and Floor Tiles to Kitchen and Bathrooms
- Choice of Carpets
- Hardwood Staircase & Internal Doors
- AEG Double Oven, Hob & Chimney Hood
- AEG Fully Integrated Dishwasher & Full Height Fridge/Freezer
- Downlighters to Kitchen and Bathrooms
- Under Pelmet Lighting to Kitchen
- Choice of Electric Fire and Surround
- Fully Integrated Security System
- Large Open Plan Kitchen/Dining Area with French Doors to Rear Garden
- Large Lounge
- Utility
- Downstairs W/C
- Dressing Room & En-Suite to Master Bedroom
- En-Suite to Bedroom 2
- 4 Double Bedrooms
- Integral Garage with 3 Additional Parking Spaces