

# The *REDBROOK* (Plots 7 & 8)

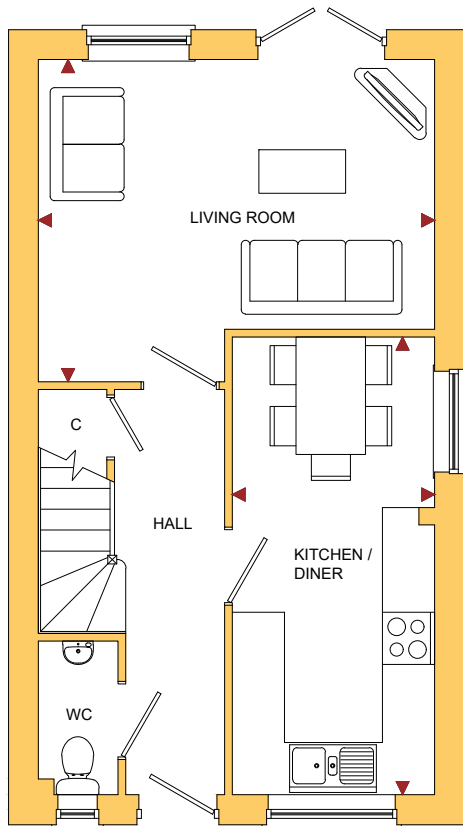
3 Bedroom Semi-Detached Home



# The REDBROOK (Plots 3, 7 & 8)

3 Bedroom Detached / Semi-Detached Home

ROOM	IMPERIAL / "	METRIC / mm
Living Room	15' 0" x 12' 2"	4560 x 3706mm
Kitchen / Diner	7' 8" x 17' 4"	2330 x 5267mm



GROUND FLOOR

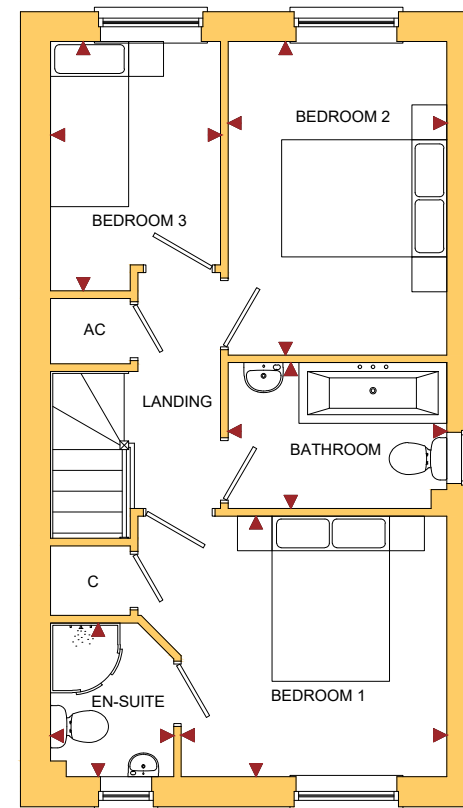
**TOTAL FLOOR AREA**  
830ft<sup>2</sup> / 77.2m<sup>2</sup>

[www.bellhomes.com](http://www.bellhomes.com)

# Willow Walk

Lea, Ross-on-Wye, HR9 7ND

ROOM	IMPERIAL / "	METRIC / mm
Bedroom 1	10' 0" x 9' 10"	3055 x 3000mm
Bedroom 2	8' 3" x 11' 10"	2517 x 3606mm
Bedroom 3	6' 5" x 9' 5"	1955 x 2869mm
Bathroom	8' 3" x 5' 6"	2517 x 1678mm
En-Suite	4' 8" x 5' 10"	1417 x 1768mm



FIRST FLOOR

**bellhomes**  
the name that stands for quality homes

**Willow Walk, Lea, Ross-On-Wye, Herefordshire, HR9 7ND**

## **The Redbrook**

### **Key Features/Included Specification**

- Low Cost 3 Bedroom Home
- Choice of Kitchen and Worktops
- Choice of Wall Tiles
- Oven, Hob & Chimney Hood
- En-suite to Main Bedroom
- Open Plan Kitchen/Dining Room
- Lounge with French Doors to Rear Garden
- Further Double Bedroom
- Family Bathroom with Bath and Shower
- Downstairs W/C
- Two Off Road Parking Spaces
- Great Location in Popular Village

