

The *HUNTINGTON* (Plot 26)

5 Bedroom Detached Home



The *HUNTINGTON* (Plot 26)

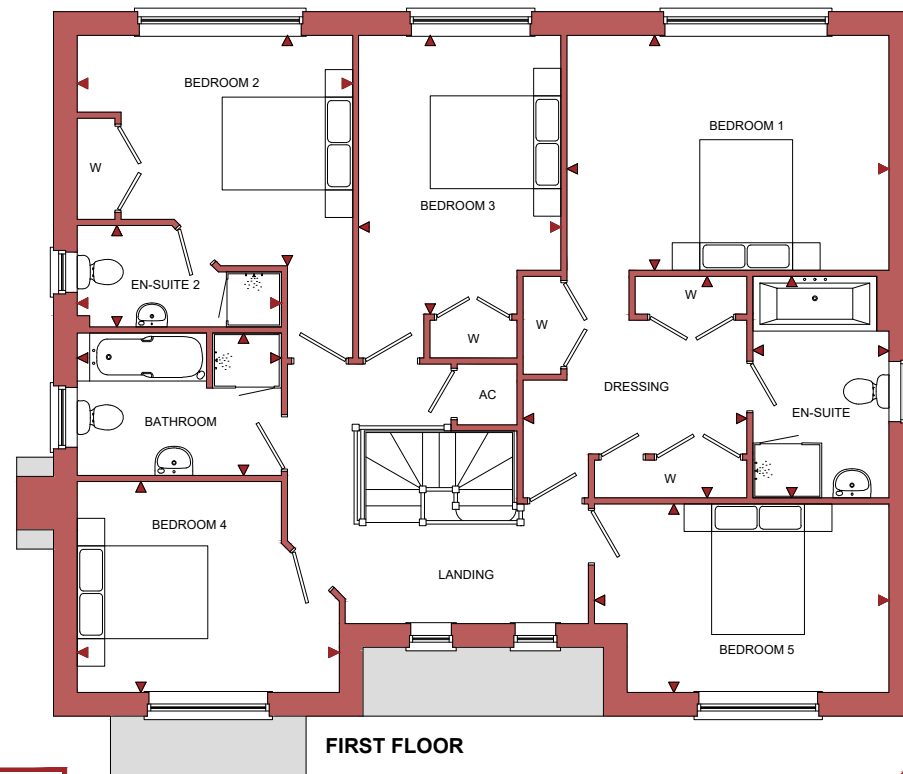
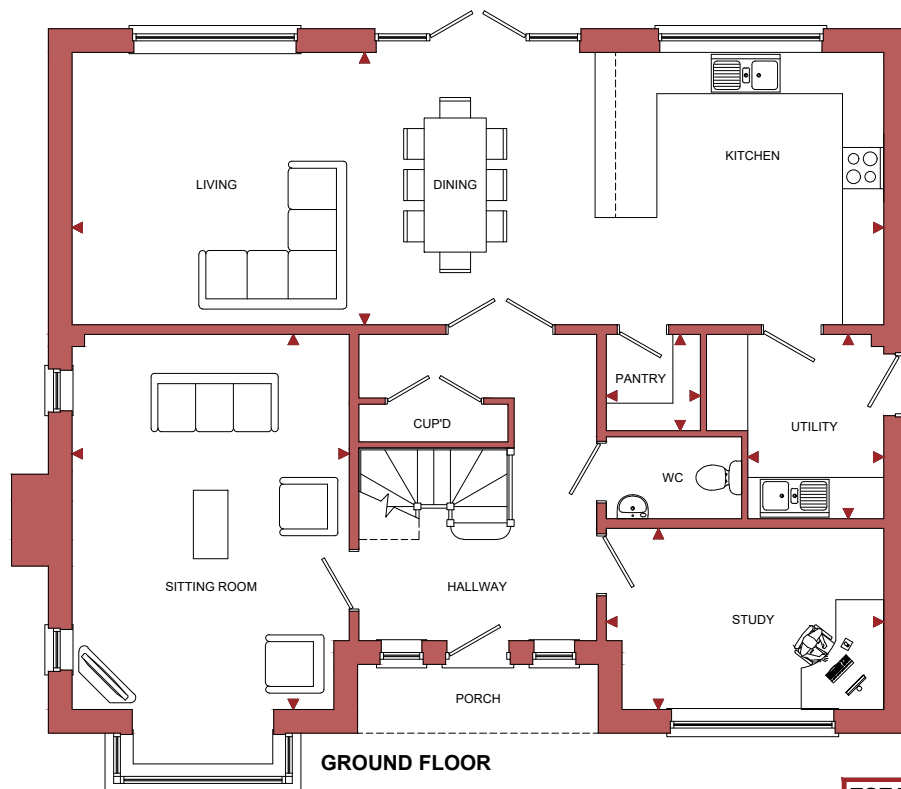
5 Bedroom Detached Home

Willow Walk

Lea, Ross-on-Wye, HR9 7ND

ROOM	IMPERIAL / "	METRIC / mm
Kitchen / Living / Diner	38' 9" x 13' 0"	11810 x 3960mm
Sitting Room	13' 3" x 17' 11"	4035 x 5460mm
Study	13' 3" x 8' 8"	4035 x 2635mm
Pantry	4' 6" x 4' 7"	1368 x 1404mm
Utility	6' 6" x 8' 10"	1980 x 2685mm

ROOM	IMPERIAL / "	METRIC / mm
Bedroom 1	15' 5" x 11' 3"	4685 x 3416mm
Bedroom 2	13' 2" x 11' 0"	4006 x 3353mm
Bedroom 3	9' 8" x 13' 4"	2944 x 4054mm
Bedroom 4	12' 6" x 10' 1"	3810 x 3060mm
Bedroom 5	14' 1" x 9' 0"	4285 x 2742mm
Bathroom	9' 9" x 6' 10"	2968 x 2075mm
En-Suite	6' 6" x 10' 7"	1980 x 3226mm
En-Suite 2	9' 9" x 4' 10"	2968 x 1475mm
Dressing Room	10' 8" x 10' 7"	3255 x 3226mm



TOTAL FLOOR AREA
2358ft² / 219.1m²

www.bellhomes.com

bellhomes

the name that stands for quality homes

We strive to make each home and development as varied and interesting as possible. Therefore the above is for illustration purposes only and individual properties may vary. Please ask for details of specific properties. Every care has been taken with the preparation of this information, which has been produced for your guidance only and does not form part of a contract. The Plans are NOT TO SCALE. Please do not use this information for purchase of furnishings and furniture.



bellhomes

the name that stands for **quality homes**

Willow Walk, Lea, Ross-On-Wye, Herefordshire, HR9 7ND

The Huntington

Key Features/Included Specification

- Choice of Premium Range Kitchen Units
- Choice of Granite or Solid Wood Worktops & Upstands
- Choice of Wall and Floor Tiles to Kitchen, Utility and all Wet Rooms
- Choice of Carpets
- Hardwood Staircase
- Oak Internal Doors with Chrome Ironmongery
- Rangemaster Oven & Chimney Hood
- AEG Double Oven, Hob & Chimney Hood (In Lieu of Rangemaster)
- AEG Fully Integrated Fridge, Freezer & Dishwasher
- Downlighters to Kitchen and Bathrooms
- Under Pelmet Lighting to Kitchen
- Choice of Electric Fire and Surround or Wood Burning Stove
- Fully Integrated Security System
- Very Spacious Open Plan Kitchen/Living/Dining Area with 2 Set of French Doors to Rear Garden
- Separate Sitting Room, Study & Utility
- Dressing Room & En-Suite to Master Bedroom
- En-Suite to Bedroom 2
- 5 Double Bedrooms
- Double Garage with 4 Additional Parking Spaces