

The *REDFORD* (Plots 2 & 3, 11 & 12 and 14 & 15)

3 Bedroom Semi-Detached Home



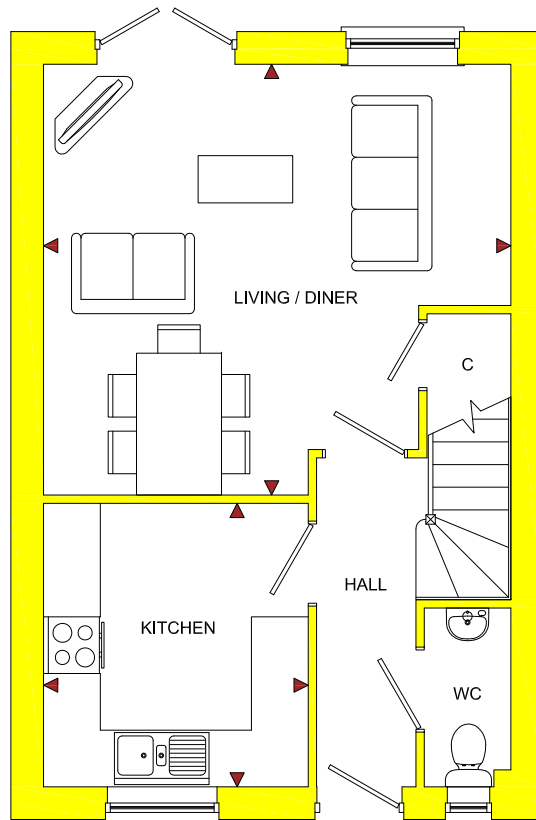
The **REDFORD** (Plots 2, 3, 11, 12, 14 & 15)

3 Bedroom Semi-Detached Home

Vine Tree Gardens

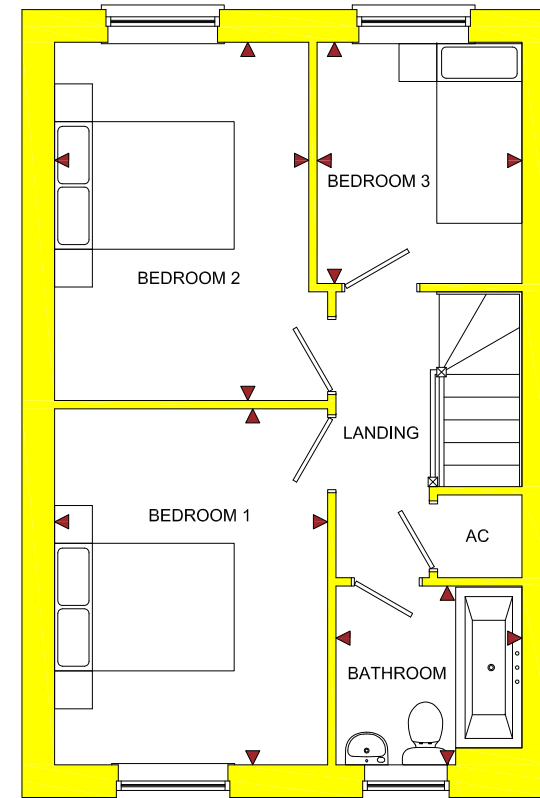
Withington, Herefordshire, HR1 3QW

ROOM	IMPERIAL / "	METRIC / mm
Living / Diner	16' 3" x 14' 12"	4945 x 4557mm
Kitchen	9' 2" x 9' 10"	2800 x 3000mm



GROUND FLOOR

ROOM	IMPERIAL / "	METRIC / mm
Bedroom 1	9' 6" x 12' 4"	2889 x 3768mm
Bedroom 2	8' 10" x 12' 5"	2690 x 3790mm
Bedroom 3	7' 1" x 8' 5"	2167 x 2552mm
Bathroom	6' 6" x 6' 3"	1968 x 1893mm



FIRST FLOOR

TOTAL FLOOR AREA
814ft² / 75.6m²

www.bellhomes.com

bellhomes

the name that stands for quality homes

We strive to make each home and development as varied and interesting as possible. Therefore the above is for illustration purposes only and individual properties may vary. Please ask for details of specific properties. Every care has been taken with the preparation of this information, which has been produced for your guidance only and does not form part of a contract. The Plans are NOT TO SCALE. Please do not use this information for purchase of furnishings and furniture.

Vine Tree Gardens, Withington, Herefordshire, HR1 3QW

The Redford

Key Features/Included Specification

- Low Cost 3 Bedroom Home
- Choice of Kitchen and Worktops
- Oven, Hob & Chimney Hood included
- Living/Dining Area with French Doors to Rear Garden
- Separate Fitted Kitchen
- 2 Double Bedrooms
- Family Bathroom with Bath and Shower Over Bath
- Downstairs W/C
- Private Garden
- 2 Off Road Parking Spaces

