

The *LANDLEA* (Plots 20 & 23)

3 Bedroom Detached Bungalow

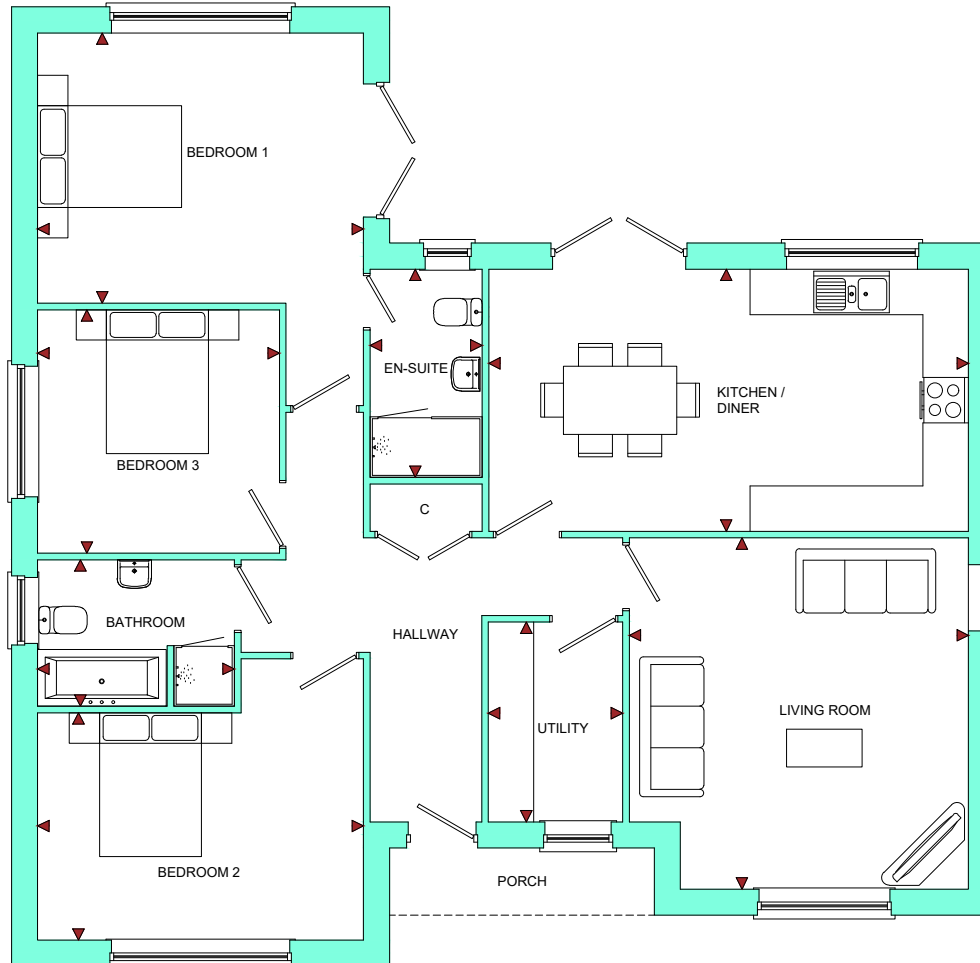


The **LANDLEA** (Plots 20 & 23)

3 Bedroom Detached Bungalow

Vine Tree Gardens

Withington, Herefordshire, HR1 3QW



GROUND FLOOR

| ROOM | IMPERIAL / " | METRIC / mm |
|-----------------|------------------|---------------|
| Kitchen / Diner | 20' 10" x 11' 5" | 6344 x 3466mm |
| Living Room | 14' 9" x 15' 3" | 4486 x 4646mm |
| Utility | 5' 10" x 8' 8" | 1775 x 2642mm |
| Bedroom 1 | 14' 2" x 11' 9" | 4310 x 3574mm |
| Bedroom 2 | 14' 2" x 9' 11" | 4310 x 3008mm |
| Bedroom 3 | 10' 6" x 10' 7" | 3197 x 3220mm |
| Bathroom | 8' 7" x 6' 4" | 2601 x 1935mm |
| En-Suite | 4' 10" x 9' 1" | 1480 x 2754mm |

TOTAL FLOOR AREA
1223ft² / 113.6m²

www.bellhomes.com

bellhomes

the name that stands for quality homes

We strive to make each home and development as varied and interesting as possible. Therefore the above is for illustration purposes only and individual properties may vary. Please ask for details of specific properties. Every care has been taken with the preparation of this information, which has been produced for your guidance only and does not form part of a contract. The Plans are NOT TO SCALE. Please do not use this information for purchase of furnishings and furniture.



bellhomes

the name that stands for **quality homes**

Vine Tree Gardens, Withington, Herefordshire, HR1 3QW

The Landlea

Key Features/Included Specification

- Help to Buy Available
- Rare Opportunity of a New Build, 3 Bedroom Detached Bungalow
- Choice of Kitchen and Worktops
- Choice of Wall and Floor Tiles to Kitchen and Bathrooms
- Choice of Carpets
- Hardwood Internal Doors with Chrome Ironmongery
- Oven, Hob & Chimney Hood
- Downlighters to Kitchen/Diner and Bathrooms
- Large Open Plan Kitchen/Dining Area with French Doors to Rear Garden
- Spacious Lounge
- Utility
- Master Bedroom with En-suite and French Doors to Rear Garden
- 3 Double Bedroom
- Double Detached Garage with 2 (Plot 23) or 4 (Plot 20) Additional Parking Spaces