

The *LANDCHESTER* (Plots 17 & 22)

3 Bedroom Detached Bungalow

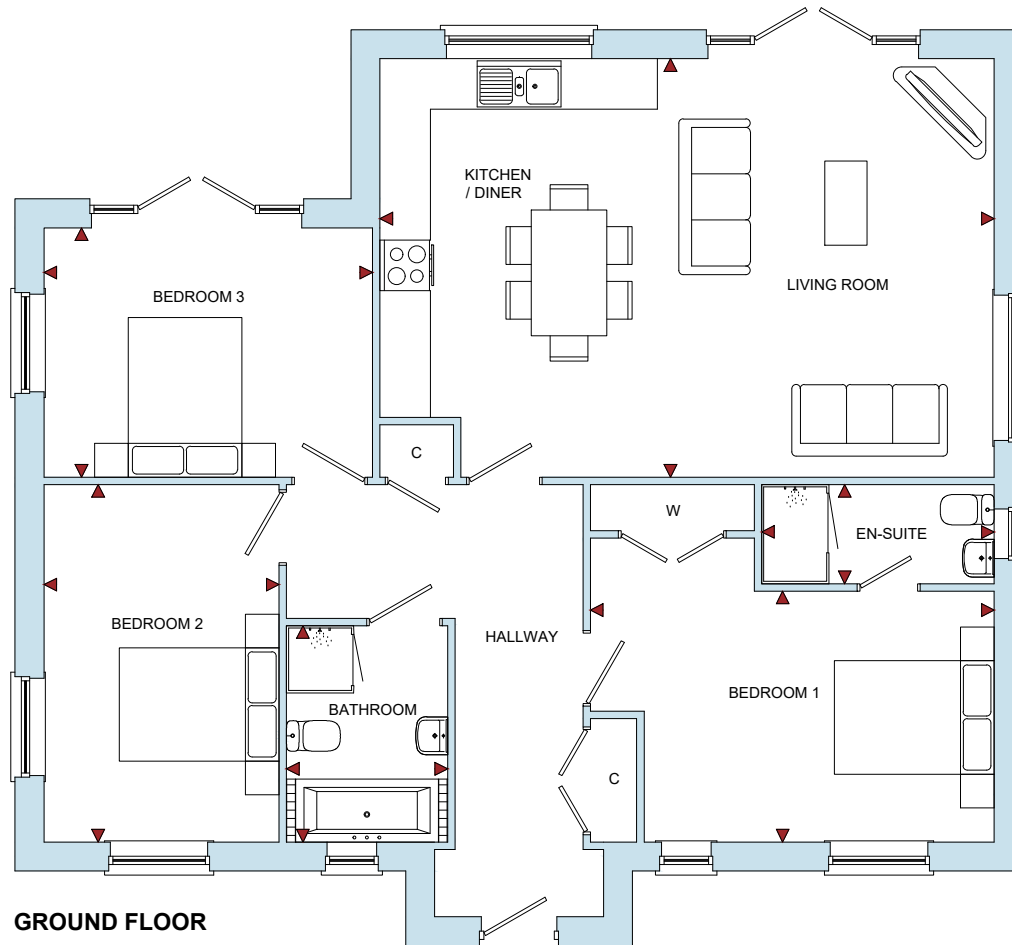


The **LANDCHESTER** (Plots 17 & 22)

3 Bedroom Detached Bungalow

Vine Tree Gardens

Withington, Herefordshire, HR1 3QW



ROOM	IMPERIAL / "	METRIC / mm
Living/Kitchen/Diner	23' 12" x 16' 4"	7310 x 4982mm
Bedroom 1	15' 9" x 9' 10"	4804 x 2987mm
Bedroom 2	9' 2" x 13' 12"	2799 x 4255mm
Bedroom 3	12' 10" x 9' 9"	3912 x 2967mm
Bathroom	6' 4" x 8' 6"	1918 x 2575mm
En-Suite	9' 1" x 3' 11"	2768 x 1180mm

TOTAL FLOOR AREA
1068ft² / 99.2m²

www.bellhomes.com

bellhomes

the name that stands for quality homes

We strive to make each home and development as varied and interesting as possible. Therefore the above is for illustration purposes only and individual properties may vary. Please ask for details of specific properties. Every care has been taken with the preparation of this information, which has been produced for your guidance only and does not form part of a contract. The Plans are NOT TO SCALE. Please do not use this information for purchase of furnishings and furniture.



bellhomes

the name that stands for **quality homes**

Vine Tree Gardens, Withington, Herefordshire, HR1 3QW

The Landchester

Key Features/Included Specification

- Help to Buy Available
- Rare Opportunity of a New Build, 3 Bedroom Detached Bungalow
- Choice of Kitchen and Worktops
- Choice of Wall and Floor Tiles to Kitchen and Bathrooms
- Choice of Carpets
- Hardwood Internal Doors with Chrome Ironmongery
- Oven, Hob & Chimney Hood
- Downlighters to Kitchen/Dining Area and Bathrooms
- Large Open Plan Kitchen/Dining/Living Area with French Doors to Rear Garden
- Master Bedroom with En-suite
- French Doors to Rear Garden in Bedroom 2
- 3 Double Bedroom
- Detached Garage (Single plot 17; Double plot 22) with 2 Additional Parking Spaces