

The *LANDBEACH* (Plots 18, 25 & 26)

3 Bedroom Detached Bungalow

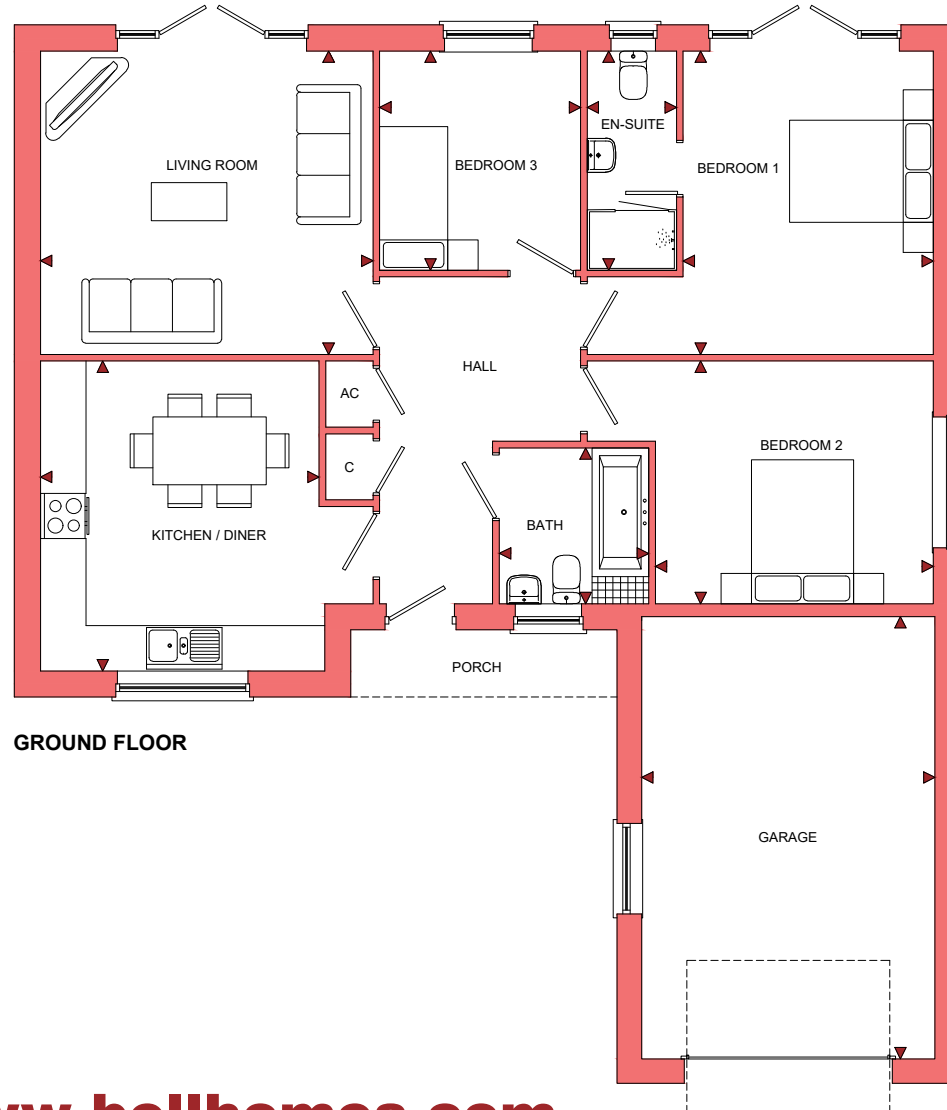


The *LANDBEACH* (Plots 18, 25 & 26)

3 Bedroom Detached Bungalow

Vine Tree Gardens

Withington, Herefordshire, HR1 3QW



ROOM	IMPERIAL / "	METRIC / mm
Kitchen / Diner	12' 1" x 13' 6"	3685 x 4100mm
Living Room	14' 5" x 13' 2"	4398 x 4012mm
Bedroom 1	10' 10" x 13' 2"	3310 x 4012mm
Bedroom 2	12' 1" x 10' 7"	3679 x 3210mm
Bedroom 3	8' 9" x 9' 6"	2658 x 2899mm
Bathroom	6' 6" x 6' 9"	1975 x 2060mm
En-Suite	3' 11" x 9' 6"	1180 x 2899mm
Garage	12' 9" x 19' 2"	3880 x 5850mm

TOTAL FLOOR AREA
965ft² / 89.7m²

www.bellhomes.com

bellhomes
the name that stands for quality homes

We strive to make each home and development as varied and interesting as possible. Therefore the above is for illustration purposes only and individual properties may vary. Please ask for details of specific properties. Every care has been taken with the preparation of this information, which has been produced for your guidance only and does not form part of a contract. The Plans are NOT TO SCALE. Please do not use this information for purchase of furnishings and furniture.

Vine Tree Gardens, Withington, Herefordshire, HR1 3QW

The Landbeach

Key Features/Included Specification

- Help to Buy Available
- Rare Opportunity of a New Build, 3 Bedroom Detached Bungalow
- Choice of Kitchen and Worktops
- Choice of Wall and Floor Tiles to Kitchen and Bathrooms
- Choice of Carpets
- Hardwood Internal Doors with Chrome Ironmongery
- Oven, Hob & Chimney Hood
- Downlighters to Kitchen/Diner and Bathrooms
- Lounge with French Doors to Rear Garden
- Kitchen with Dining Area
- Master Bedroom with En-suite and French Doors to Rear Garden
- Attached Garage with 3 Additional Parking Spaces

