

The *JAYWICK* (Plot 10)

4 Bedroom Detached Home



The JAYWICK (Plot 10)

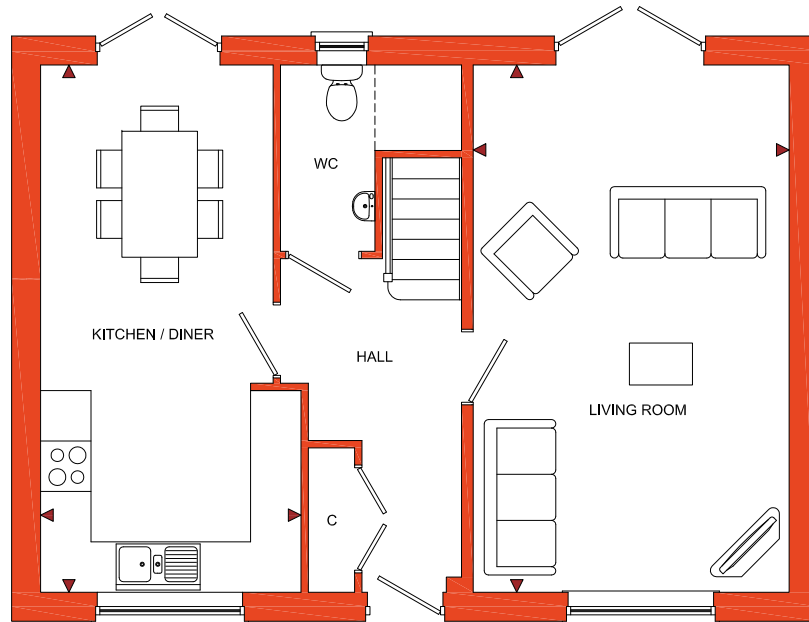
4 Bedroom Detached Home

Vine Tree Gardens

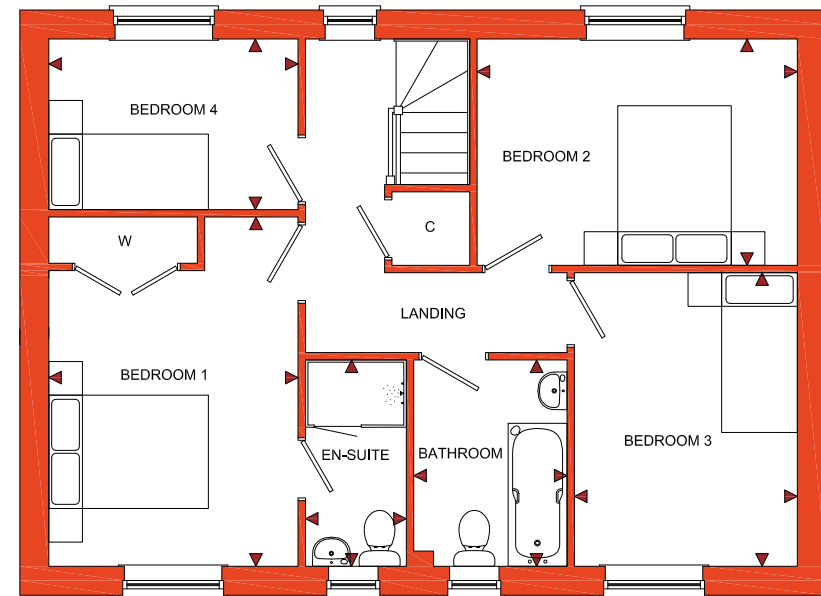
Withington, Herefordshire, HR1 3QW

ROOM	IMPERIAL / "	METRIC / mm
Living Room	12' 4" x 20' 7"	3760 x 6275mm
Kitchen / Diner	10' 2" x 20' 7"	3100 x 6275mm

ROOM	IMPERIAL / "	METRIC / mm
Bedroom 1	9' 9" x 13' 8"	2967 x 4156mm
Bedroom 2	12' 6" x 8' 10"	3812 x 2694mm
Bedroom 3	8' 9" x 11' 6"	2654 x 3493mm
Bedroom 4	9' 9" x 6' 8"	2968 x 2032mm
Bathroom	6' 0" x 8' 1"	1825 x 2455mm
En-Suite	3' 11" x 8' 1"	1200 x 2455mm



GROUND FLOOR



FIRST FLOOR

TOTAL FLOOR AREA
1204ft² / 111.8m²

www.bellhomes.com

bellhomes
the name that stands for quality homes

We strive to make each home and development as varied and interesting as possible. Therefore the above is for illustration purposes only and individual properties may vary. Please ask for details of specific properties. Every care has been taken with the preparation of this information, which has been produced for your guidance only and does not form part of a contract. The Plans are NOT TO SCALE. Please do not use this information for purchase of furnishings and furniture.

Vine Tree Gardens, Withington, Herefordshire, HR1 3QW

The Jaywick

Key Features/Included Specification

- Help to Buy Available
- Choice of Kitchen and Worktops
- Choice of Wall and Floor Tiles to Kitchen and Bathrooms
- Choice of Carpets
- Double Oven, Hob & Chimney Hood
- Fully Integrated Full Height Fridge/Freezer
- Downlighters to Kitchen and Bathrooms
- En-suite to Main Bedroom
- Large Living Area with French Doors to Rear Garden
- Open Plan Kitchen/Dining Room with French Doors to Rear Garden
- Downstairs W/C
- Single Detached Garage with 2 Additional Parking Spaces

