

The *BREAMORE* (Plot 13)

4 Bedroom Detached Home



The **BREAMORE** (Plot 13)

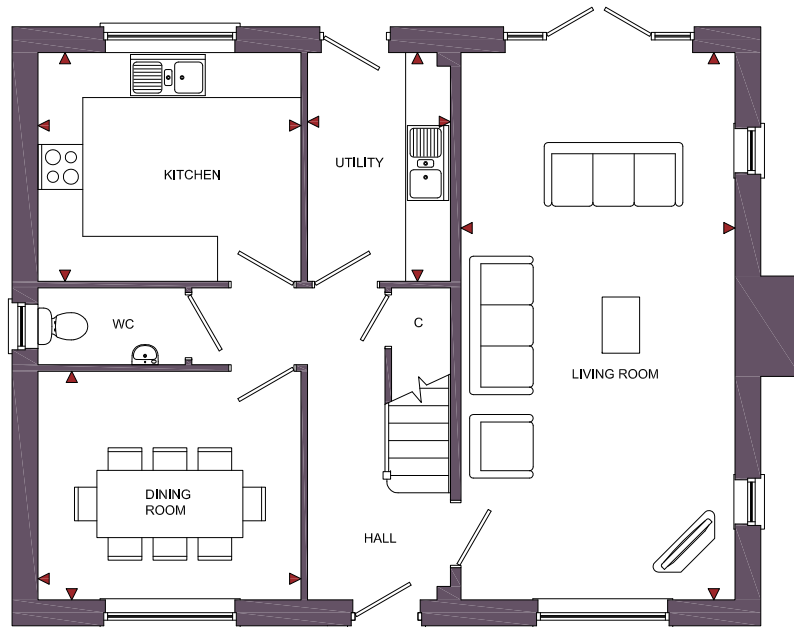
4 Bedroom Detached Home

Vine Tree Gardens

Withington, Herefordshire, HR1 3QW

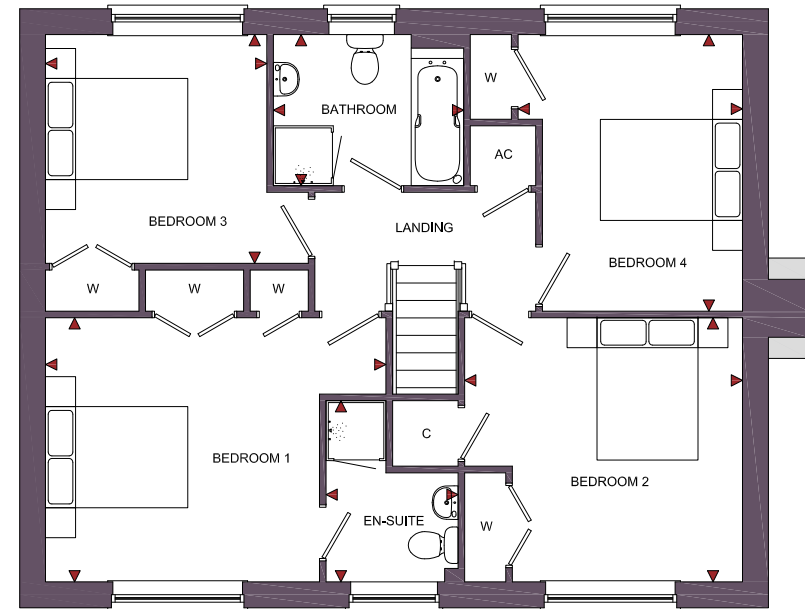
ROOM	IMPERIAL / "	METRIC / mm
Living Room	12' 0" x 24' 0"	3660 x 7310mm
Dining Room	11' 6" x 10' 0"	3512 x 3055mm
Kitchen	11' 6" x 10' 0"	3512 x 3055mm
Utility	6' 3" x 10' 0"	1910 x 3055mm

ROOM	IMPERIAL / "	METRIC / mm
Bedroom 1	14' 11" x 11' 7"	4547 x 3528mm
Bedroom 2	12' 2" x 11' 7"	3712 x 3528mm
Bedroom 3	9' 8" x 10' 0"	2955 x 3056mm
Bedroom 4	9' 10" x 12' 2"	3000 x 3694mm
Bathroom	8' 4" x 6' 8"	2542 x 2018mm
En-Suite	5' 10" x 7' 11"	1763 x 2421mm



GROUND FLOOR

TOTAL FLOOR AREA
1465ft² / 136.1m²



FIRST FLOOR

www.bellhomes.com

We strive to make each home and development as varied and interesting as possible. Therefore the above is for illustration purposes only and individual properties may vary. Please ask for details of specific properties. Every care has been taken with the preparation of this information, which has been produced for your guidance only and does not form part of a contract. The Plans are NOT TO SCALE. Please do not use this information for purchase of furnishings and furniture.


bellhomes
the name that stands for quality homes

Vine Tree Gardens, Withington, Herefordshire, HR1 3QW

The Breamore

Key Features/Included Specification

- Help to Buy Available
- Choice of Kitchen and Worktops
- Choice of Wall and Floor Tiles to Kitchen and Bathrooms
- Choice of Carpets
- Hardwood Staircase & Internal Doors
- Double Oven, Hob & Chimney Hood
- Fully Integrated Dishwasher & Full Height Fridge/Freezer
- Downlighters to Kitchen and Bathrooms
- Under Pelmet Lighting to Kitchen
- Choice of Gas Fire and Surround or Wood Burning Stove
- Fully Integrated Security System
- Utility
- Large Living/Dining Area with French Doors to Rear Garden
- Separate Study/Dining Room
- En-suite to Main Bedroom
- 4 Double Bedrooms with Fitted Wardrobes
- Double Garage with 2 Additional Parking Spaces

