

# The *RUSHBURY* (Plot 4)

4 Bedroom Detached Home with ensuite

3

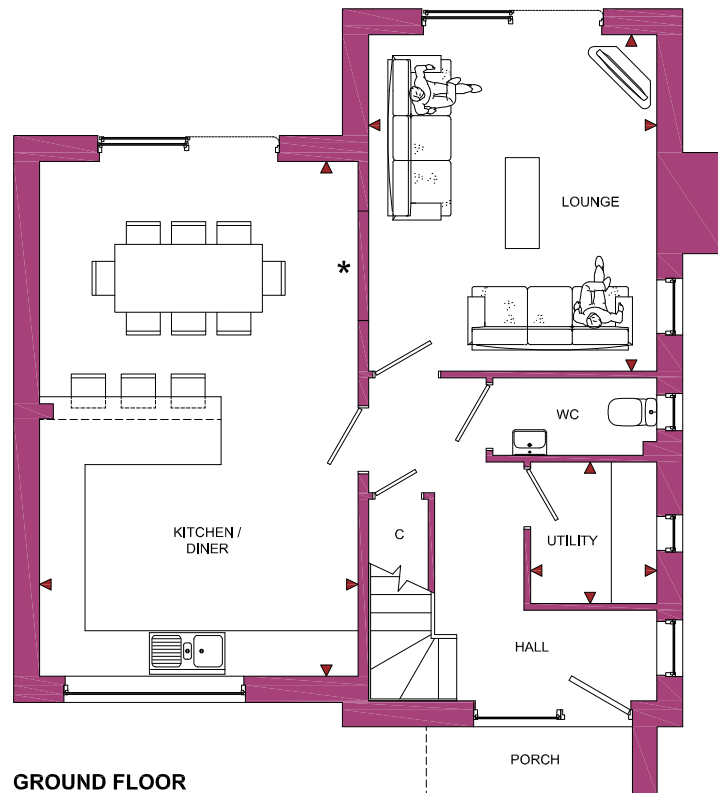
4



# The *RUSHBURY* (Plot 4)

4 Bedroom Detached Home with ensuite

ROOM	IMPERIAL / "	METRIC / mm
Lounge	12' 6" x 14' 7"	3810 x 4450mm
Kitchen / Diner	13' 10" x 22' 4"	4210 x 6810mm
Utility	5' 6" x 6' 2"	1667 x 1875mm



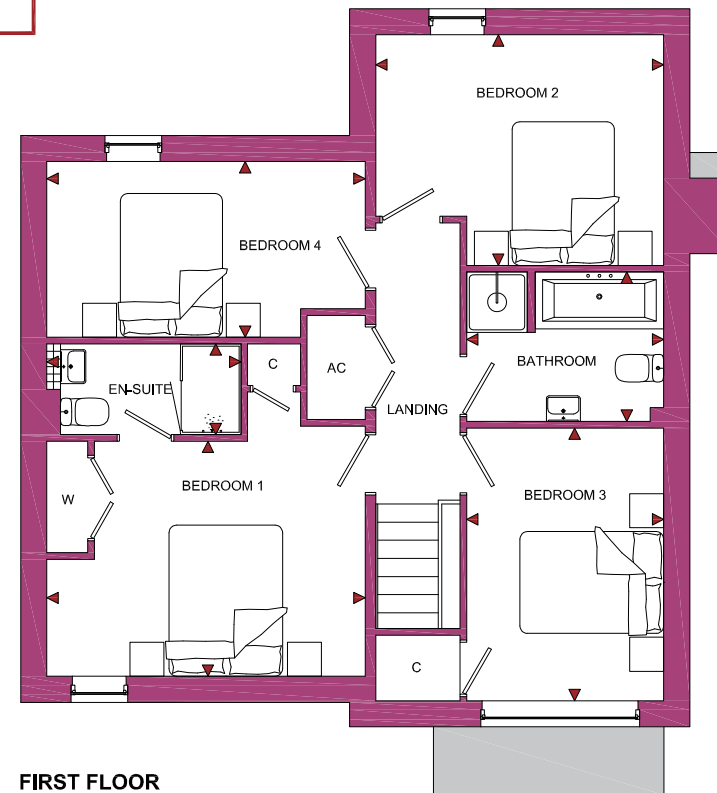
GROUND FLOOR

**TOTAL FLOOR AREA**  
1360ft<sup>2</sup> / 126.4m<sup>2</sup>

# The *Crossways*

Holmer, Herefordshire, HR1 1LA

ROOM	IMPERIAL / "	METRIC / mm
Bedroom 1	13' 10" x 10' 3"	4210 x 3110mm
Bedroom 2	12' 6" x 10' 0"	3810 x 3049mm
Bedroom 3	8' 7" x 11' 10"	2604 x 3610mm
Bedroom 4	13' 10" x 7' 8"	4210 x 2324mm
Bathroom	8' 7" x 6' 6"	2605 x 1975mm
En-Suite	8' 5" x 3' 11"	2568 x 1200mm



FIRST FLOOR

\* Provision has been made to allow for double doors to be inserted between Lounge and Kitchen / Diner if customer requires.

[www.bellhomes.com](http://www.bellhomes.com)

We strive to make each home and development as varied and interesting as possible. Therefore the above is for illustration purposes only and individual properties may vary. Please ask for details of specific properties. Every care has been taken with the preparation of this information, which has been produced for your guidance only and does not form part of a contract. The Plans are NOT TO SCALE. Please do not use this information for purchase of furnishings and furniture.



**bellhomes**

the name that stands for quality homes

**Crossways, Roman Road, Holmer, Hereford. HR1 1LA**

## **The Rushbury**

### **Key Features/Included Specification**

- Help to Buy Available
- Choice of Kitchen Units, Worktops & Upstands
- Choice of Wall and Floor Tiles to Kitchen, Utility and all Wet Rooms
- Choice of Carpets
- Hardwood Staircase
- Oak Internal Doors with Chrome Ironmongery
- Neff Double Oven, Hob & Chimney Hood
- Neff Fully Integrated Dishwasher & Full Height Fridge/Freezer
- Downlighters to Kitchen and Bathrooms
- Fully Integrated Security System
- Open Plan Kitchen/Dining Area with Patio Doors to Rear Garden
- Utility
- Downstairs W/C
- En-Suite to Master Bedroom
- 4 Double Bedrooms
- 3 Parking Spaces
- Shed to Rear Garden

