

The *LANDKEY* (Plot 17)

3 Bedroom Detached Bungalow

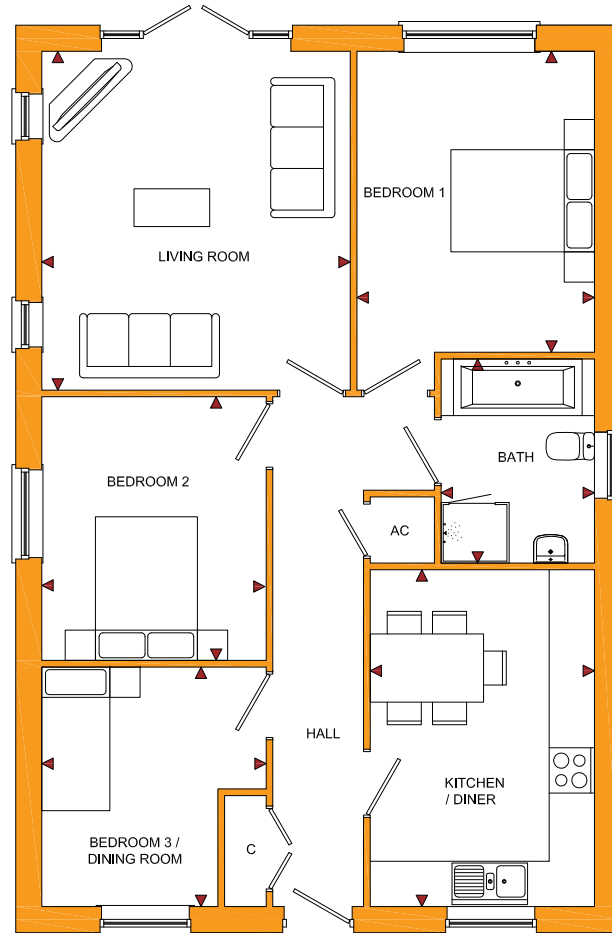


The *LANDKEY* (Plot 17)

3 Bedroom Detached Bungalow

Squires Meadow

Lea, Herefordshire, HR9 7JZ



GROUND FLOOR

ROOM	IMPERIAL / "	METRIC / mm
Living Room	13' 5" x 14' 9"	4080 x 4480mm
Kitchen/ Diner	9' 9" x 14' 7"	2967 x 4454mm
Bedroom 1	10' 4" x 14' 9"	3142 x 4480mm
Bedroom 2	9' 9" x 11' 5"	2967 x 3487mm
Bedroom 3	9' 9" x 10' 5"	2967 x 3168mm
Bathroom	6' 8" x 8' 10"	2029 x 2700mm

TOTAL FLOOR AREA
890ft² / 82.7m²

www.bellhomes.com

We strive to make each home and development as varied and interesting as possible. Therefore the above is for illustration purposes only and individual properties may vary. Please ask for details of specific properties. Every care has been taken with the preparation of this information, which has been produced for your guidance only and does not form part of a contract. The Plans are NOT TO SCALE. Please do not use this information for purchase of furnishings and furniture.


bellhomes

the name that stands for quality homes

Squires Meadow, Lea, Ross-On-Wye, Herefordshire, HR9 7JZ

The Landkey

Key Features/Included Specification

- Help to Buy Available
- Rare Opportunity of a New Build, 3 Bedroom Detached Bungalow
- Choice of Kitchen and Worktops
- Choice of Wall and Floor Tiles to Kitchen and Bathrooms
- Choice of Carpets
- Hotpoint Oven, Hob & Chimney Hood
- Downlighters to Kitchen and Bathrooms
- Lounge with French Doors to Rear Garden
- Two Double Bedrooms plus a Single Bedroom (or Separate Dining Room)
- Family Bathroom with Bath and Shower Enclosure
- Single Detached Garage with Additional 2 Parking Spaces
- Great Location in Popular Village

