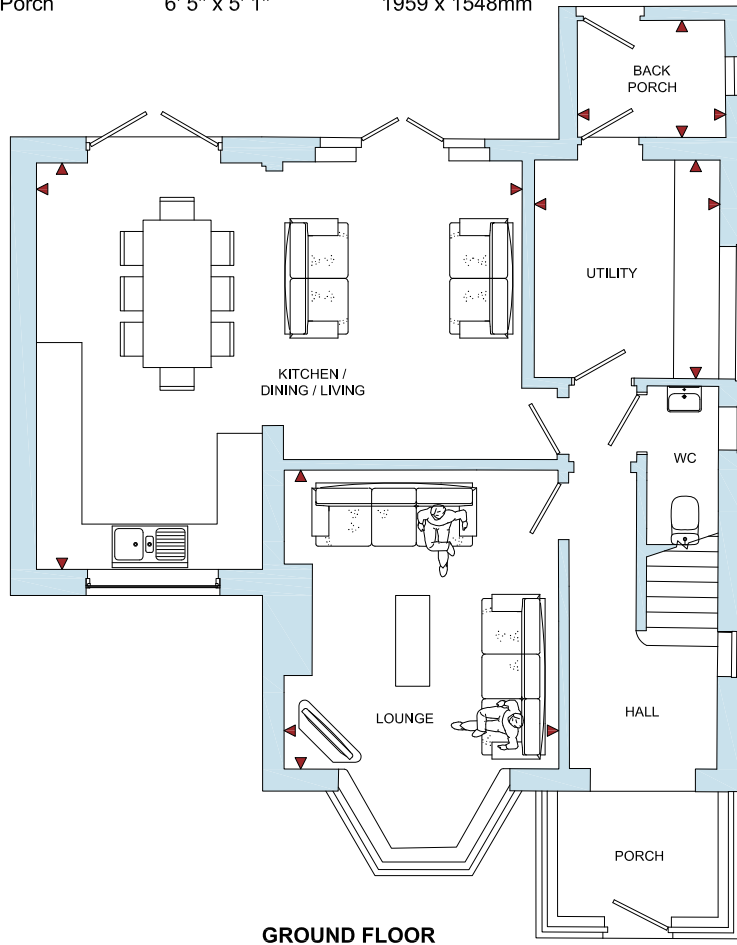


The Crossways (Plot 5)

4 Bedroom Detached Home with ensuite

ROOM	IMPERIAL / "	METRIC / mm
Lounge	11' 11" x 13' 0"	3634 x 3953mm
Kitchen/Dining/Living	21' 1" x 17' 8"	6424 x 5375mm
Utility	8' 1" x 9' 6"	2456 x 2889mm
Back Porch	6' 5" x 5' 1"	1959 x 1548mm

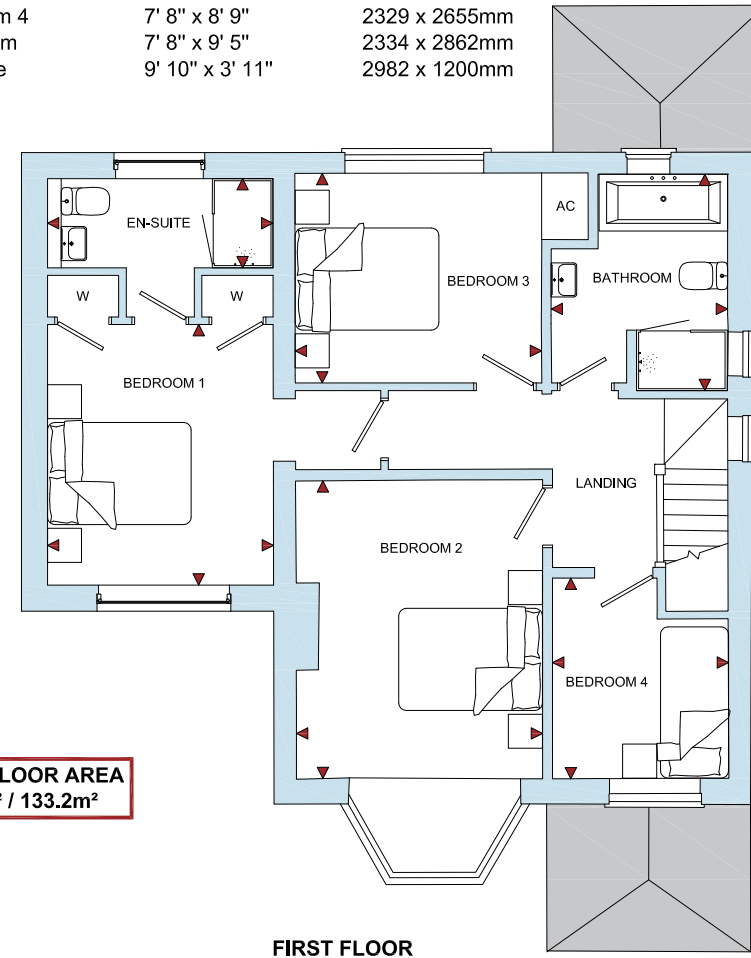


GROUND FLOOR

The Crossways

Holmer, Herefordshire, HR1 1LA

ROOM	IMPERIAL / "	METRIC / mm
Bedroom 1	9' 10" x 11' 4"	2990 x 3445mm
Bedroom 2	10' 8" x 12' 11"	3253 x 3937mm
Bedroom 3	10' 8" x 9' 1"	3259 x 2773mm
Bedroom 4	7' 8" x 8' 9"	2329 x 2655mm
Bathroom	7' 8" x 9' 5"	2334 x 2862mm
En-Suite	9' 10" x 3' 11"	2982 x 1200mm



FIRST FLOOR

TOTAL FLOOR AREA
1434ft² / 133.2m²

www.bellhomes.com

bellhomes

the name that stands for quality homes

We strive to make each home and development as varied and interesting as possible. Therefore the above is for illustration purposes only and individual properties may vary. Please ask for details of specific properties. Every care has been taken with the preparation of this information, which has been produced for your guidance only and does not form part of a contract. The Plans are NOT TO SCALE. Please do not use this information for purchase of furnishings and furniture.

Crossways, Roman Road, Holmer, Hereford. HR1 1LA

The Crossways

Key Features/Included Specification

- Choice of Kitchen Units, Worktops & Upstands
- Choice of Wall and Floor Tiles to Kitchen, Utility and all Wet Rooms
- Choice of Carpets
- Oak Internal Doors with Chrome Ironmongery
- Neff Double Oven, Hob & Chimney Hood
- Neff Fully Integrated Dishwasher & Full Height Fridge/Freezer
- Downlighters to Kitchen and Bathrooms
- Fully Integrated Security System
- Open Plan Kitchen/Dining/Living Area with 2 Sets of Patio Doors to Rear Garden
- Separate Lounge
- Utility
- Downstairs W/C
- En-Suite to Master Bedroom
- 3 Parking Spaces
- Shed to Rear Garden

