



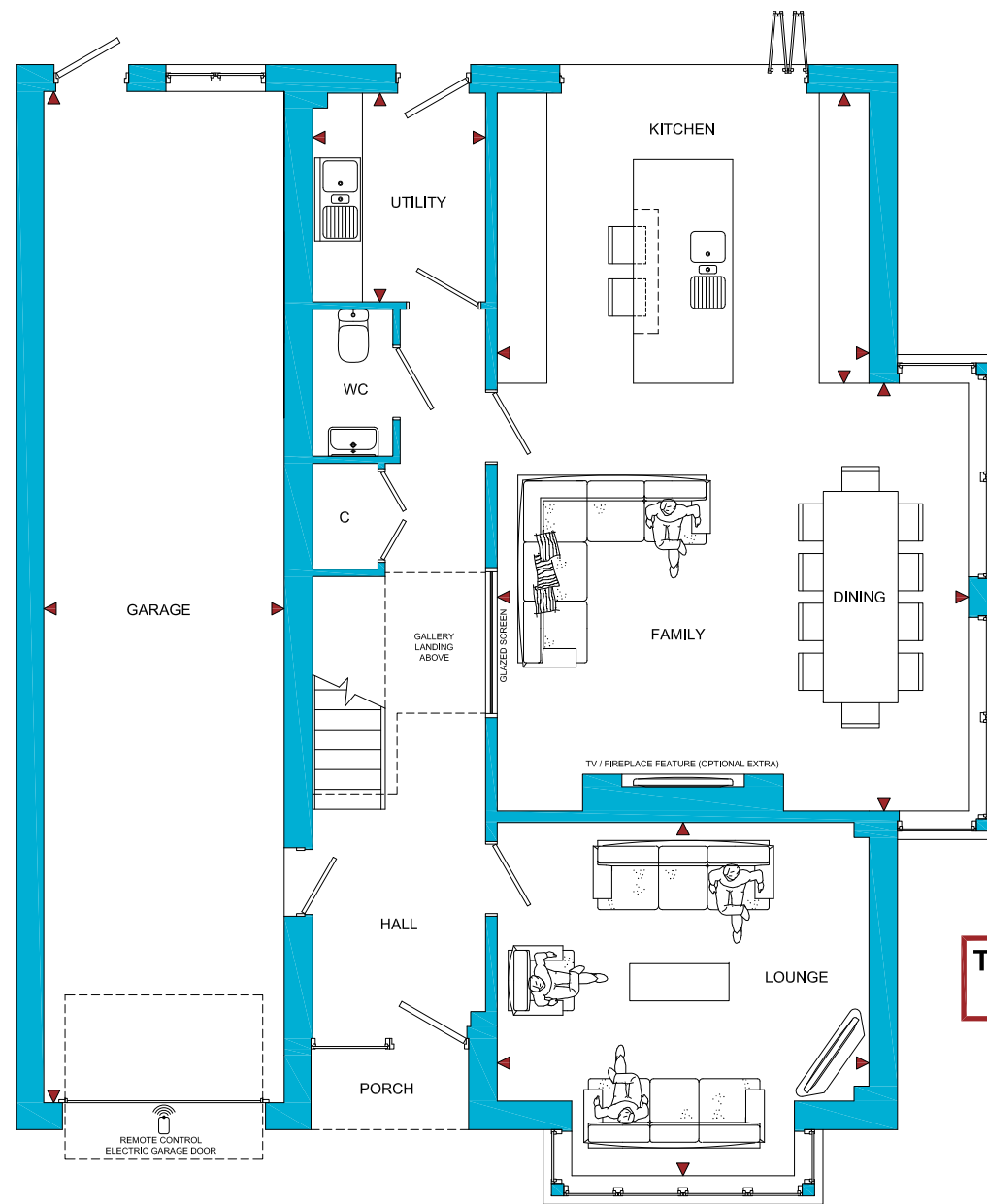
**The CEDAR** (Plot 3)

4 Bedroom Detached Home

# The CEDAR

4 Bedroom Detached Home

ROOM	IMPERIAL / "	METRIC / mm
Lounge	14' 9" x 14' 0"	4485 x 4260mm
Kitchen	14' 9" x 11' 6"	4485 x 3500mm
Dining / Family	18' 8" x 16' 11"	5685 x 5160mm
Utility	6' 10" x 8' 3"	2085 x 2518mm
Garage	9' 6" x 40' 0"	2900 x 12200mm



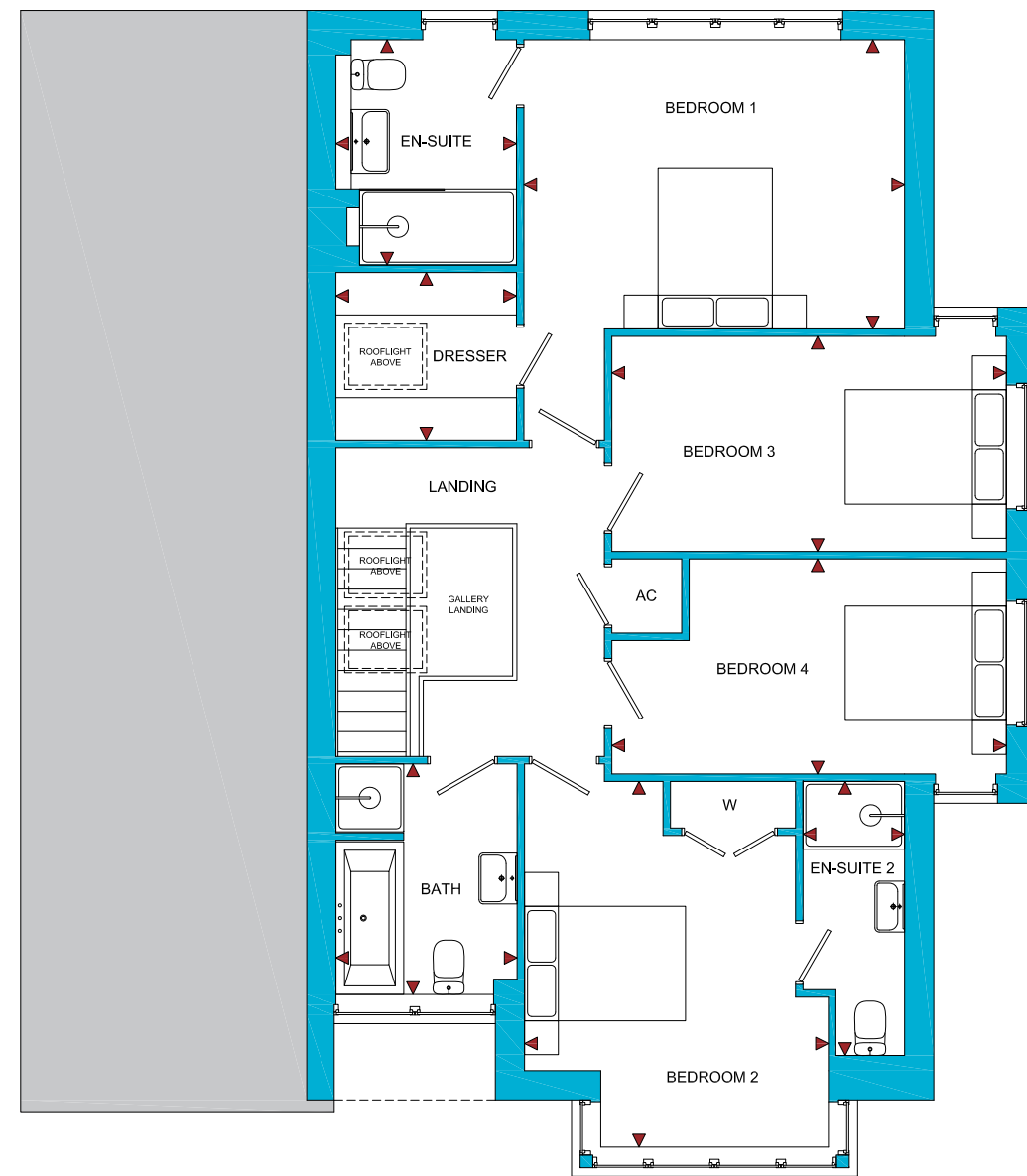
GROUND FLOOR

**TOTAL FLOOR AREA**  
1900ft<sup>2</sup> / 176.5m<sup>2</sup>

# Evendine Mews

Colwall, Malvern, Worcestershire, WR13 6HY


ROOM	IMPERIAL / "	METRIC / mm
Bedroom 1	14' 9" x 11' 2"	4493 x 3412mm
Bedroom 2	11' 9" x 14' 2"	3585 x 4312mm
Bedroom 3	15' 3" x 8' 4"	4655 x 2536mm
Bedroom 4	15' 3" x 8' 4"	4655 x 2536mm
Bathroom	7' 0" x 8' 11"	2137 x 2718mm
En-Suite	7' 0" x 8' 9"	2129 x 2659mm
Dresser	7' 0" x 6' 6"	2129 x 1975mm
En-Suite 2	3' 11" x 10' 7"	1200 x 3232mm



FIRST FLOOR

[www.bellhomes.com](http://www.bellhomes.com)

We strive to make each home and development as varied and interesting as possible. Therefore the above is for illustration purposes only and individual properties may vary. Please ask for details of specific properties. Every care has been taken with the preparation of this information, which has been produced for your guidance only and does not form part of a contract. The Plans are NOT TO SCALE. Please do not use this information for purchase of furnishings and furniture.

  
bellhomes

the name that stands for quality homes

**Evendine Mews, Colwall, Malvern, Worcestershire. WR13 6HY**

## **The Cedar**

### **Key Features/Included Specification**

- Stunning Contemporary Design
- Choice of Premium Range Kitchen Units with Central Island
- Choice of Granite, Solid Wood or Silestone Worktops & Upstands
- Choice of Wall and Floor Tiles to Kitchen, Utility and all Wet Rooms
- Choice of Carpets and Floor Finishes Throughout
- Underfloor Heating to Ground Floor
- Feature Oak Staircase with Glass Balustrading and Gallery Landing
- Contemporary Oak or Grey Veneer Internal Doors with Chrome Ironmongery
- Neff Built In Twin Single Ovens Mounted Side by Side
- Neff 5 Burner Gas Hob & Steel/Glass Chimney Hood
- Neff Fully Integrated Dishwasher and Full Height Fridge/Freezer
- 'Insinkerator' Steaming Hot Water Tap to Kitchen
- Downlighters to Kitchen/Living Area, Utility, Hallway and Bathrooms
- Under Pelmet Lighting to Kitchen & Utility
- Fully Integrated Security System
- Aluminium Doors, Windows & Guttering



**Evendine Mews, Colwall, Malvern, Worcestershire. WR13 6HY**

**The Cedar**

**Key Features/Included Specification (Continued)**



- Spacious Open Plan Kitchen/Living/Dining Area with Large Bi-Fold Patio Doors to Rear Garden
- Separate Lounge
- Utility
- Walk In Dressing Room and En-Suite with Walk In Shower to Master Bedroom
- Ensuite to Bedroom 2
- Fitted Furniture to Bathroom and Master En-Suite
- 4 Double Bedrooms
- Pre-installed Attic Trusses Giving 500 Square Foot of Additional Space
- Tandem Garage with 2 Additional Parking Spaces