

The *BREAMORE* (Plots 23 & 29)

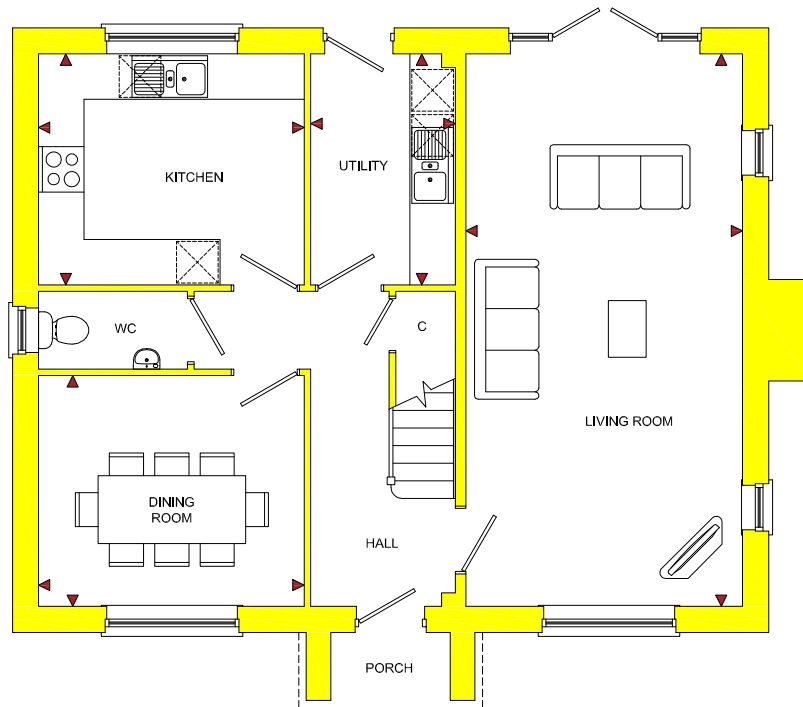
4 Bedroom Detached Home



The *BREAMORE* (Plots 23 & 29)

4 Bedroom Detached Home

ROOM	IMPERIAL / "	METRIC / mm
Living Room	12' 0" x 24' 0"	3660 x 7310mm
Dining Room	11' 6" x 10' 0"	3512 x 3055mm
Kitchen	11' 6" x 10' 0"	3512 x 3055mm
Utility	6' 3" x 10' 0"	1910 x 3055mm

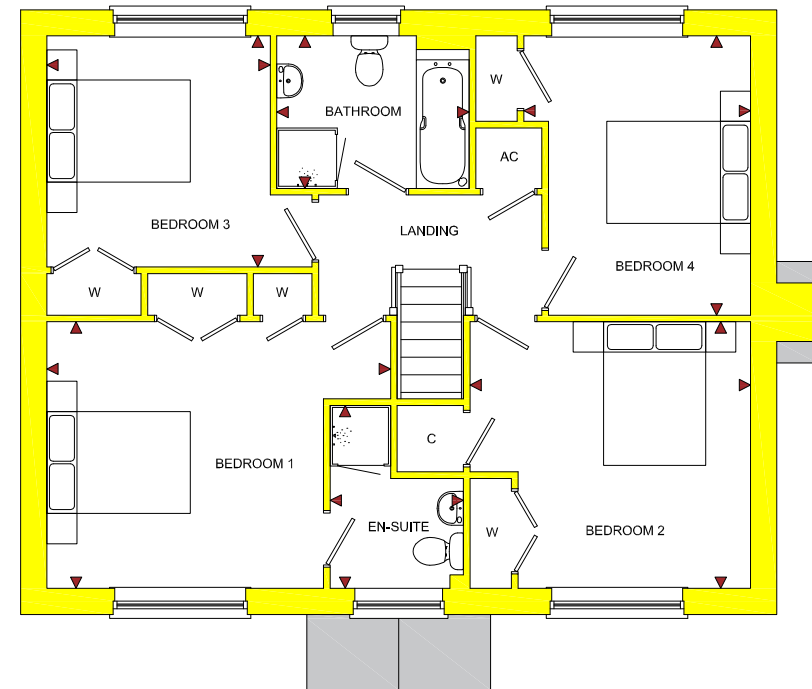


GROUND FLOOR

Quarry Field

Lugwardine, Herefordshire, HR1 4AA

ROOM	IMPERIAL / "	METRIC / mm
Bedroom 1	14' 11" x 11' 7"	4547 x 3528mm
Bedroom 2	12' 2" x 11' 7"	3712 x 3528mm
Bedroom 3	9' 8" x 10' 0"	2955 x 3056mm
Bedroom 4	9' 10" x 12' 2"	3000 x 3694mm
Bathroom	8' 4" x 6' 8"	2542 x 2018mm
En-Suite	5' 10" x 7' 11"	1763 x 2421mm



FIRST FLOOR

TOTAL FLOOR AREA
1465ft² / 136.1m²

www.bellhomes.com

bellhomes
the name that stands for quality homes

We strive to make each home and development as varied and interesting as possible. Therefore the above is for illustration purposes only and individual properties may vary. Please ask for details of specific properties. Every care has been taken with the preparation of this information, which has been produced for your guidance only and does not form part of a contract. The Plans are NOT TO SCALE. Please do not use this information for purchase of furnishings and furniture.

Quarry Field, Lugwardine, Herefordshire, HR1 4AA

The Breamore

Key Features/Included Specification

- Help to Buy Available
- Choice of Kitchen Units, Worktops & Upstands
- Choice of Wall and Floor Tiles to Kitchen, Utility and all Wet Rooms
- Choice of Carpets
- Hardwood Oak Staircase
- Oak Internal Doors with Chrome Ironmongery
- Neff Double Oven, Hob & Chimney Hood
- Neff Fully Integrated Dishwasher & Full Height Fridge/Freezer
- Downlighters to Kitchen and Bathrooms
- Under Pelmet Lighting to Kitchen & Utility
- Choice of Gas Fire and Surround or Wood Burning Stove
- Fully Integrated Security System
- Spacious Lounge with French Doors to Rear Garden
- Separate Dining Room
- Utility
- Downstairs W/C
- En-Suite to Master Bedroom
- 4 Double Bedrooms with Fitted Wardrobes
- Double Garage with 2 to 4 Additional Parking Spaces

