

The *BREAMORE* (Plots 19 & 40) 4 Bedroom Detached Home



# The **BREAMORE** (Plots 19 & 40)

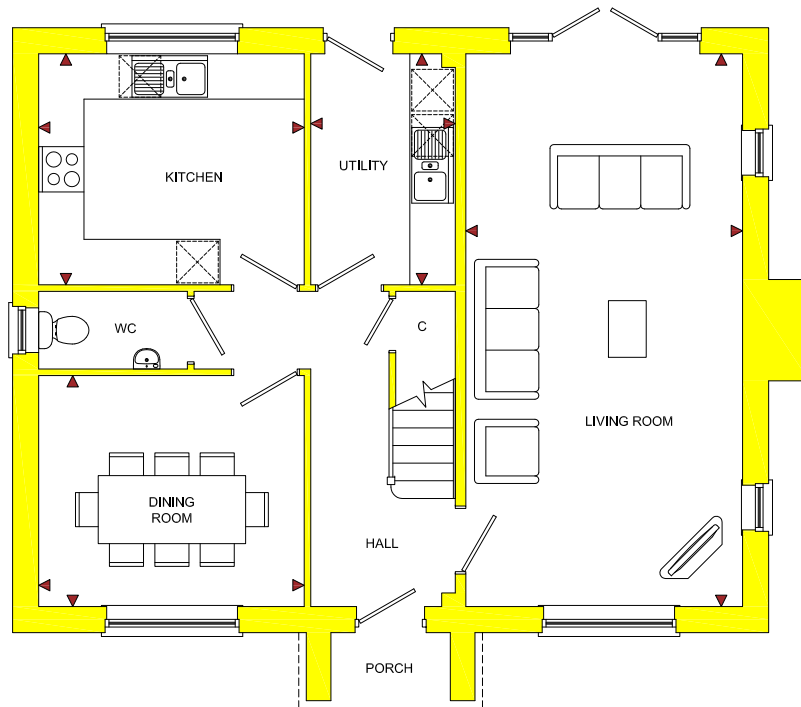
4 Bedroom Detached Home

# England's Field

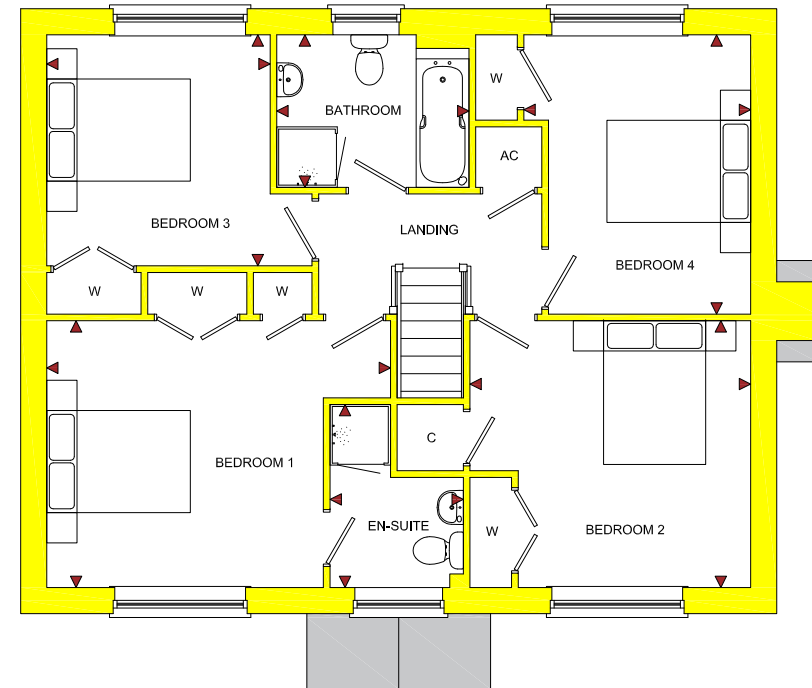
Bodenham, Herefordshire, HR1 3HU

ROOM	IMPERIAL / "	METRIC / mm
Living Room	12' 0" x 24' 0"	3660 x 7310mm
Dining Room	11' 6" x 10' 0"	3512 x 3055mm
Kitchen	11' 6" x 10' 0"	3512 x 3055mm
Utility	6' 3" x 10' 0"	1910 x 3055mm

ROOM	IMPERIAL / "	METRIC / mm
Bedroom 1	14' 11" x 11' 7"	4547 x 3528mm
Bedroom 2	12' 2" x 11' 7"	3712 x 3528mm
Bedroom 3	9' 8" x 10' 0"	2955 x 3056mm
Bedroom 4	9' 10" x 12' 2"	3000 x 3694mm
Bathroom	8' 4" x 6' 8"	2542 x 2018mm
En-Suite	5' 10" x 7' 11"	1763 x 2421mm



GROUND FLOOR



FIRST FLOOR

**TOTAL FLOOR AREA**  
1465ft<sup>2</sup> / 136.1m<sup>2</sup>

[www.bellhomes.com](http://www.bellhomes.com)

**bellhomes**  
the name that stands for quality homes

We strive to make each home and development as varied and interesting as possible. Therefore the above is for illustration purposes only and individual properties may vary. Please ask for details of specific properties. Every care has been taken with the preparation of this information, which has been produced for your guidance only and does not form part of a contract. The Plans are NOT TO SCALE. Please do not use this information for purchase of furnishings and furniture.