

# The *WILLOWDALE* (Plots 16 & 17)

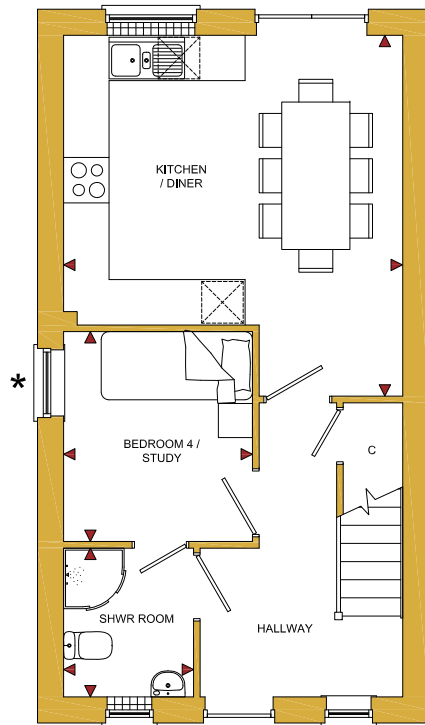
4 Bedroom Semi-Detached Home



# The *WILLOWDALE* (Plots 16 & 17)

4 Bedroom Semi-Detached Home

ROOM	IMPERIAL / "	METRIC / mm
Kitchen / Diner	14' 9" x 15' 8"	4485 x 4772mm
Bedroom 4 / Study	8' 2" x 9' 1"	2497 x 2775mm
Shower Room	5' 8" x 6' 6"	1718 x 1968mm



GROUND FLOOR

\* Window in Bedroom 4 / Study in slightly different position on Plot 17

[www.bellhomes.com](http://www.bellhomes.com)

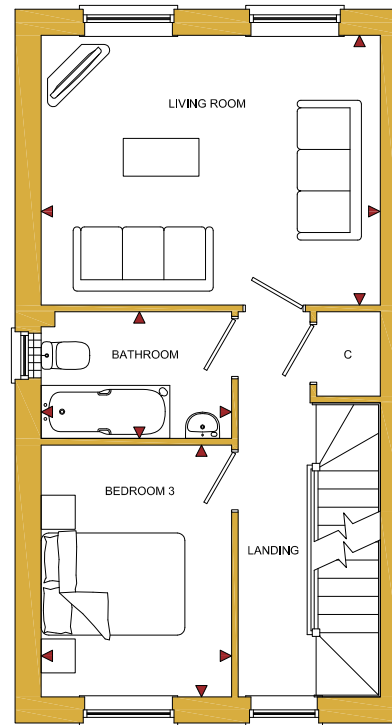
We strive to make each home and development as varied and interesting as possible. Therefore the above is for illustration purposes only and individual properties may vary. Please ask for details of specific properties. Every care has been taken with the preparation of this information, which has been produced for your guidance only and does not form part of a contract. The Plans are NOT TO SCALE. Please do not use this information for purchase of furnishings and furniture.

**TOTAL FLOOR AREA**  
1267ft<sup>2</sup> / 117.7m<sup>2</sup>

# Blenheim Rise

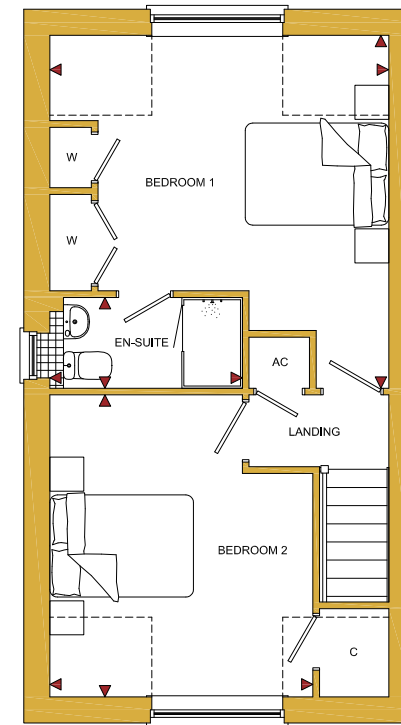
Randwick, Stroud, Glos, GL6 6JY

ROOM	IMPERIAL / "	METRIC / mm
Living Room	14' 9" x 11' 9"	4485 x 3568mm
Bedroom 3	8' 3" x 10' 11"	2518 x 3331mm
Bathroom	8' 3" x 5' 6"	2518 x 1675mm



FIRST FLOOR

ROOM	IMPERIAL / "	METRIC / mm
Bedroom 1	14' 9" x 15' 4"	4485 x 4668mm
Bedroom 2	14' 9" x 13' 1"	4485 x 3994mm
En-Suite	8' 4" x 3' 11"	2547 x 1200mm



SECOND FLOOR



**bellhomes**

the name that stands for quality homes