

The *KINGSLAND* (Plots 14 & 15)

3 Bedroom Semi-Detached Home

14

15

16

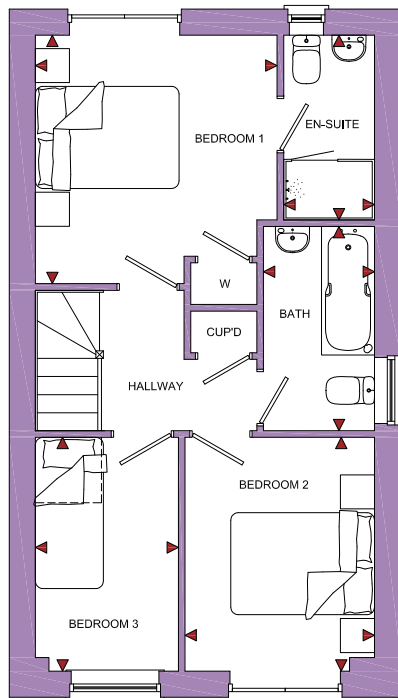
17



The **KINGSLAND** (Plots 14 & 15)

3 Bedroom Semi-Detached Home

ROOM	IMPERIAL / "	METRIC / mm
Bedroom 1	10' 6" x 10' 9"	3197 x 3286mm
Bedroom 2	8' 3" x 10' 2"	2505 x 3092mm
Bedroom 3	6' 4" x 10' 2"	1937 x 3092mm
Bathroom	4' 10" x 8' 10"	1467 x 2700mm
En-Suite	3' 11" x 8' 0"	1200 x 2442mm

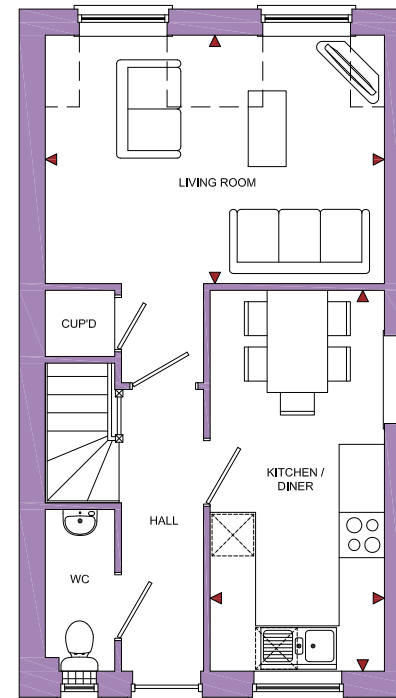


LOWER GROUND FLOOR

Blenheim Rise

Randwick, Stroud, Glos, GL6 6JY

ROOM	IMPERIAL / "	METRIC / mm
Living Room	14' 9" x 10' 9"	4485 x 3286mm
Kitchen / Diner	7' 7" x 16' 6"	2305 x 5037mm



UPPER GROUND FLOOR

www.bellhomes.com

TOTAL FLOOR AREA
812ft² / 75.4m²

bellhomes

the name that stands for quality homes

We strive to make each home and development as varied and interesting as possible. Therefore the above is for illustration purposes only and individual properties may vary. Please ask for details of specific properties. Every care has been taken with the preparation of this information, which has been produced for your guidance only and does not form part of a contract. The Plans are NOT TO SCALE. Please do not use this information for purchase of furnishings and furniture.