

The *WOODCHESTER* (Plot 13)

5 / 6 Bedroom Detached Home

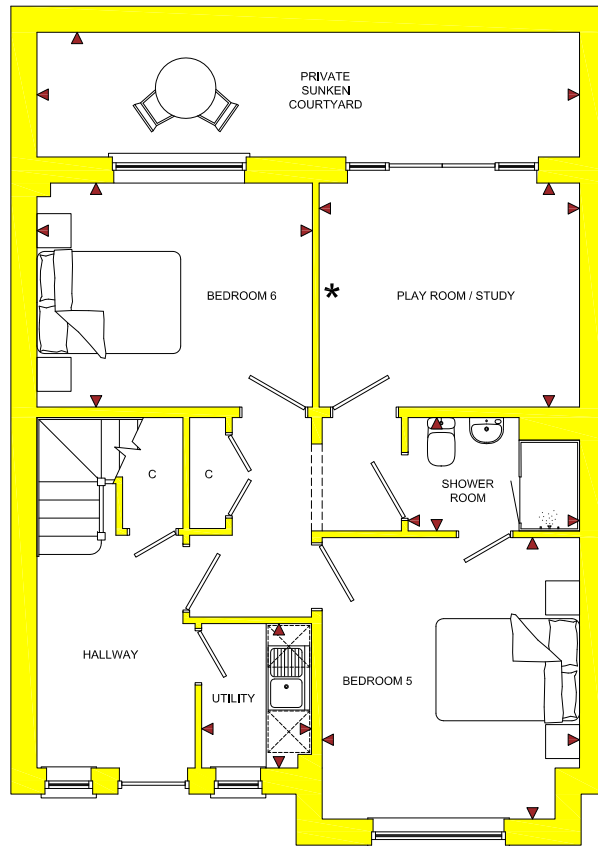
13



The **WOODCHESTER** (Plot 13)

5 / 6 Bedroom Detached Home

ROOM	IMPERIAL / "	METRIC / mm
Bedroom 5	11' 2" x 12' 3"	3405 x 3722mm
Bedroom 6	12' 0" x 9' 9"	3642 x 2960mm
Play Room / Study	11' 4" x 9' 9"	3445 x 2960mm
Utility	4' 9" x 6' 3"	1452 x 1909mm
Shower Room	7' 5" x 4' 11"	2268 x 1500mm
Sunken Courtyard	23' 7" x 5' 5"	7175 x 1650mm

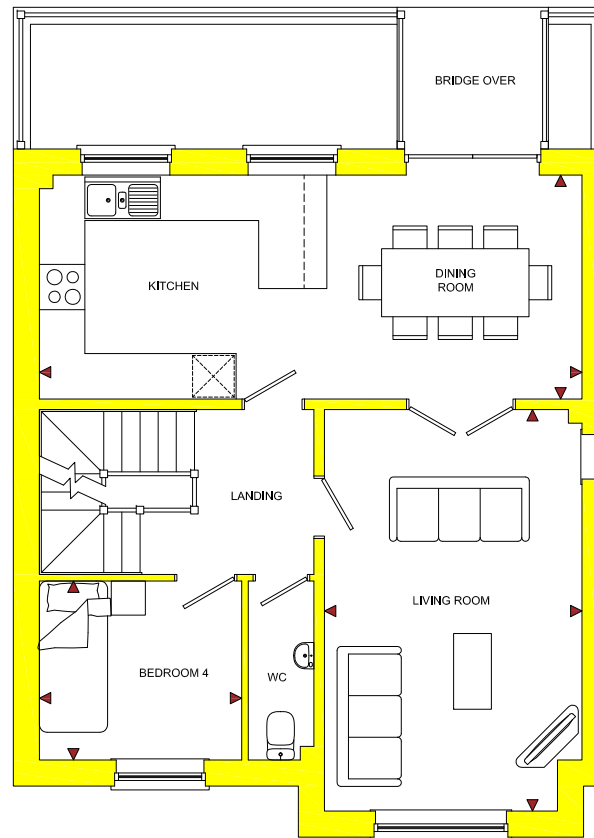


GROUND FLOOR

* This wall can be omitted and room converted to open plan Kitchen / Dining / Living area to provide self-contained Ground Floor Flat. A price for which can be provided upon request.

www.bellhomes.com

ROOM	IMPERIAL / "	METRIC / mm
Kitchen / Diner	23' 7" x 9' 9"	7175 x 2960mm
Living Room	11' 2" x 17' 5"	3405 x 5310mm
Bedroom 4	8' 9" x 7' 9"	2675 x 2367mm



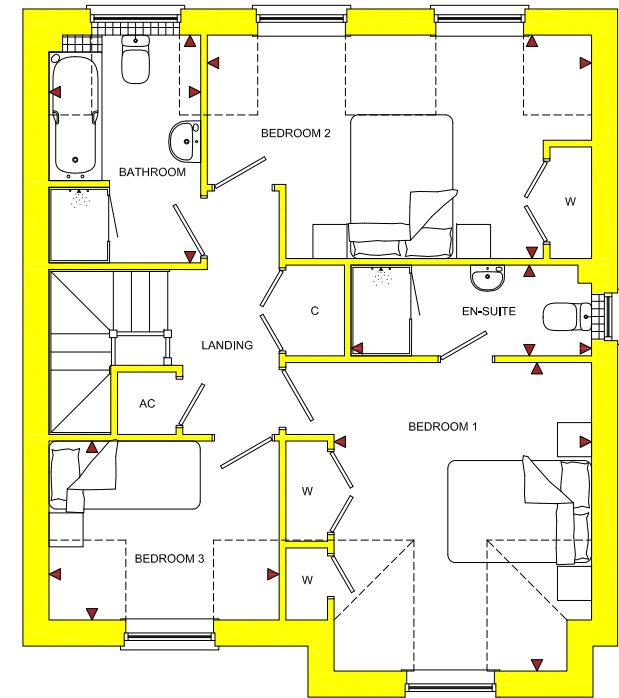
FIRST FLOOR

TOTAL FLOOR AREA
1860ft² / 172.7m²

Blenheim Rise

Randwick, Stroud, Glos, GL6 6JY

ROOM	IMPERIAL / "	METRIC / mm
Bedroom 1	11' 2" x 13' 5"	3405 x 4080mm
Bedroom 2	16' 8" x 9' 8"	5081 x 2954mm
Bedroom 3	10' 0" x 7' 9"	3044 x 2367mm
Bathroom	6' 7" x 9' 11"	2006 x 3012mm
En-Suite	10' 5" x 3' 11"	3180 x 1200mm



SECOND FLOOR



bellhomes

the name that stands for quality homes