

# The *KINGSWOOD* (Plots 5 & 6)

3 Bedroom Semi-Detached Home

5

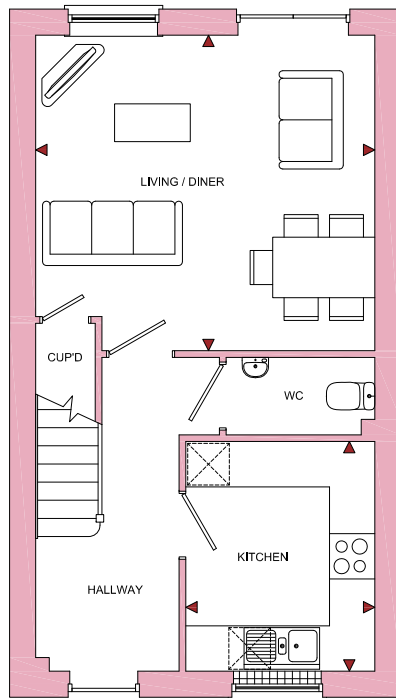
6



# The **KINGSWOOD** (Plots 5 & 6)

3 Bedroom Semi-Detached Home

ROOM	IMPERIAL / "	METRIC / mm
Living / Diner	14' 9" x 13' 8"	4485 x 4172mm
Kitchen	8' 3" x 10' 0"	2500 x 3037mm

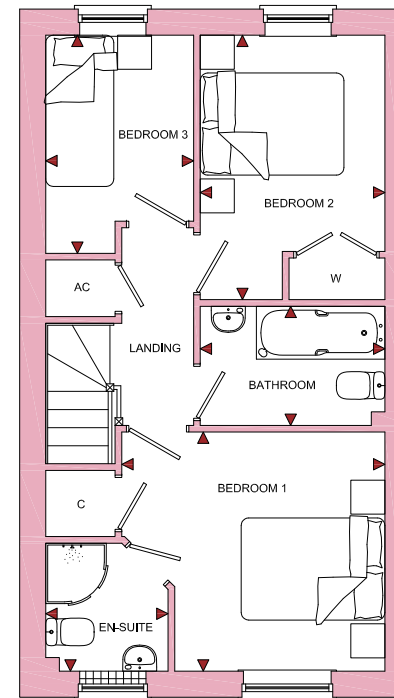


GROUND FLOOR

# **Blenheim Rise**

Randwick, Stroud, Glos, GL6 6JY

ROOM	IMPERIAL / "	METRIC / mm
Bedroom 1	11' 5" x 10' 5"	3480 x 3162mm
Bedroom 2	8' 0" x 11' 6"	2442 x 3496mm
Bedroom 3	6' 5" x 9' 6"	1955 x 2884mm
Bathroom	8' 0" x 5' 2"	2442 x 1575mm
En-Suite	5' 4" x 5' 7"	1618 x 1692mm



FIRST FLOOR

[www.bellhomes.com](http://www.bellhomes.com)

**TOTAL FLOOR AREA**  
812ft<sup>2</sup> / 75.4m<sup>2</sup>

**bellhomes**

the name that stands for quality homes

We strive to make each home and development as varied and interesting as possible. Therefore the above is for illustration purposes only and individual properties may vary. Please ask for details of specific properties. Every care has been taken with the preparation of this information, which has been produced for your guidance only and does not form part of a contract. The Plans are NOT TO SCALE. Please do not use this information for purchase of furnishings and furniture.