

# The *BRIMSCOMBE* (Plots 9 & 10)

3 Bedroom Semi-Detached Home

9

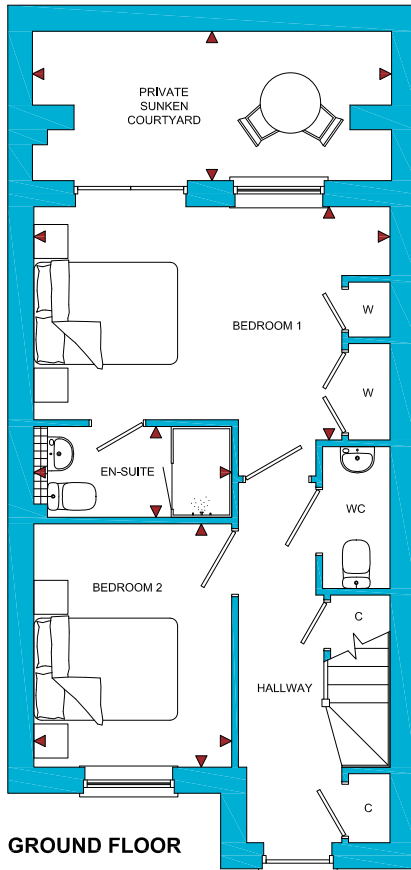
10



# The **BRIMSCOMBE** (Plots 9 & 10)

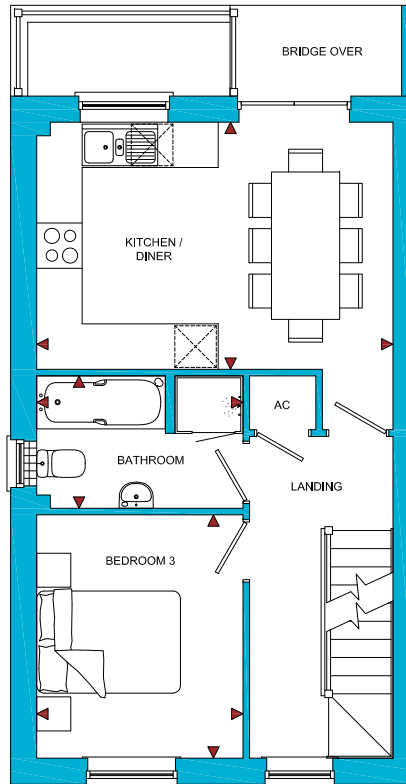
3 Bedroom Semi-Detached Home

ROOM	IMPERIAL / "	METRIC / mm
Bedroom 1	15' 6" x 10' 2"	4710 x 3085mm
Bedroom 2	8' 7" x 10' 7"	2617 x 3216mm
En-Suite	8' 7" x 3' 11"	2617 x 1200mm
Sunken Courtyard	15' 7" x 6' 6"	4750 x 1975mm



GROUND FLOOR

ROOM	IMPERIAL / "	METRIC / mm
Kitchen / Diner	15' 6" x 10' 9"	4710 x 3268mm
Bedroom 3	8' 11" x 10' 7"	2727 x 3217mm
Bathroom	8' 11" x 5' 9"	2727 x 1750mm

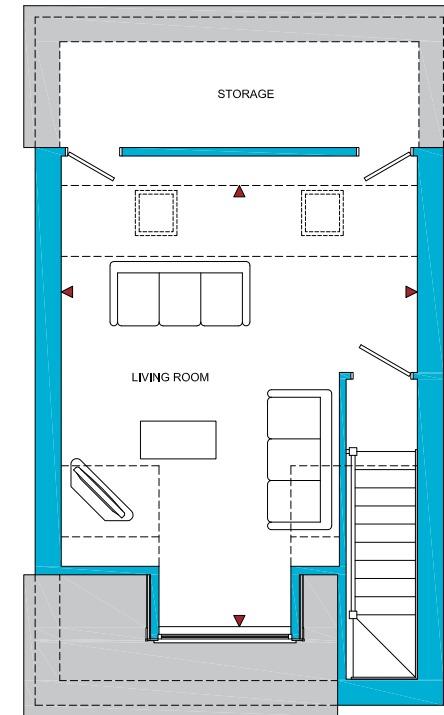


FIRST FLOOR

# Blenheim Rise

Randwick, Stroud, Glos, GL6 6JY

ROOM	IMPERIAL / "	METRIC / mm
Living Room	15' 6" x 19' 2"	4710 x 5836mm



SECOND FLOOR

[www.bellhomes.com](http://www.bellhomes.com)

**TOTAL FLOOR AREA**  
1100ft<sup>2</sup> / 102.1m<sup>2</sup>

**bellhomes**

the name that stands for quality homes

We strive to make each home and development as varied and interesting as possible. Therefore the above is for illustration purposes only and individual properties may vary. Please ask for details of specific properties. Every care has been taken with the preparation of this information, which has been produced for your guidance only and does not form part of a contract. The Plans are NOT TO SCALE. Please do not use this information for purchase of furnishings and furniture.